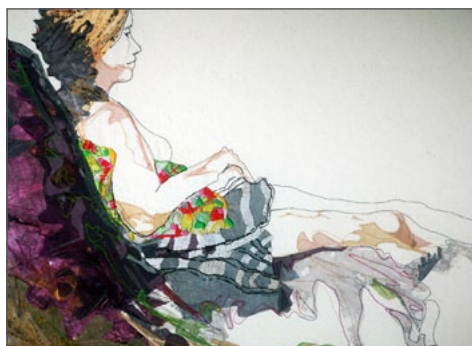


DERBYSHIRE OPEN ARTS 2022

Saturday 28th and Sunday 29th May 2022

FREE brochure, FREE Flip Book and FREE admission to artist's venues countywide
Opening hours 10am-5pm



@DerbyshireOArts



@derbyshireopenarts



SCAN ME

www.derbyshireopenarts.co.uk



Welcome to Derbyshire Open Arts 2022

An Open Studio Event

Saturday 28th and Sunday 29th May 2022

Opening hours 10.00am - 5.00pm unless otherwise stated in individual entries

Derbyshire Open Arts is a well-loved annual event, run with, by and for artists, celebrating the creativity and passion of Derbyshire makers and creators. And oh, how we have missed it over the past two years! It's the perfect way to spend a spring weekend, exploring our beautiful county, checking out inspirational arts and crafts in traditional studios, pubs, gardens, barns, galleries and even a garage.

And now, for 2022, our artists are back, bigger, stronger, and even keener to open their doors to visitors. Over the weekend, we'll be welcoming visitors to our homes, studios, galleries and gardens, sharing, discussing and selling our work. All our venues are FREE to visit and this brochure and the Flipbook available from our website, contains details of everyone taking part.

Make a cup of coffee, sit back, and browse through our huge range of artists and makers. You'll discover printmakers, painters, weavers, jewellers, glassmakers, potters and lots more, laid out by geographical location and easily searchable by category on the website. Use the route planner on the website to plan your own trail, or download one drawn up by the artists themselves.

Our artists could not be more excited to be opening their doors to meet you! You will receive a very warm welcome; disabled access is available at most of our venues and we ask all our artists to ensure their work is suitable for family viewing. Our website, Facebook and Instagram links provide the gateway to all our artists, their venues, and events. Details of opening days, times and events are all easily accessed via our social media links.

Derbyshire Open Arts is run by volunteers and is funded entirely by our artists' subscriptions and brochure advertisers. Please do support our advertisers and the many cafes, garden centres, hotels and galleries who promote our event. And, if you're inspired by what you see, why not come and join us? You can offer to help via our email info@derbyshireopenarts.co.uk, our facebook page, or by speaking to our artists when you visit.

Whether you manage to see one or many of our artists this year, we're looking forward to meeting you over the weekend. Most importantly, it's a brilliant opportunity to get out and explore Derbyshire, meet lots of interesting people, see inspirational art and have a great time.

Please enjoy our event - it's great to be back!

Pete Singer, Derbyshire Open Arts Chair



Stay up to date with Social Media!

You can get the latest on all things to do with Derbyshire Open Arts by following us on social media. Find us on Facebook and Instagram and not only will get to hear the news as it happens, but by posting photographs and comments about the art you have seen, you will help to *make* the news!

We have got an amazing group of artists and makers taking part in this year's event and they like nothing better than to open their studios, let you into some of their art practice secrets and ultimately connect with their visitors throughout the event and beyond!

Leading up to the event, we will be featuring a spotlight on the artists taking part and this year we are especially interested in finding out more about how the environment influences the artistic work rooted in our magnificent county of Derbyshire. So... watch this space!

But remember, you've got to follow us to get the inside track!

Spread the word!

The team of volunteers who make sure Derbyshire Open Arts is one of THE Must Go To events in the county all raise awareness of the incredible creativity in Derbyshire. They do this not only through social media, but through advertising in any place they can possibly think of. You will read about us in magazines, papers, on posters, leaflets, banners and maybe even hear us on radio!

If you have a little spare time to give the event an even bigger shout out next year and become one of our fabulous volunteers, we'd love to hear from you! This event only happens because of our volunteers and there's no doubt it really is a rewarding experience.

What Next?

It's simple! Follow us, join us, tell all your friends and family, and most importantly, visit us! We are so looking forward to seeing you in our studios on May 28th-29th 2022!

Contact info:

Email us: info@derbyshireopenarts.co.uk

Website: <https://www.derbyshireopenarts.co.uk>



Facebook: <https://www.facebook.com/derbyshireOarts>
Tag us using @DerbyshireOarts



Instagram: <https://www.instagram.com/derbyshireopenarts>
Tag us using @derbyshireopenarts



How to use this brochure

Artists are listed according to venue location both in the brochure and on the map in the middle of the brochure. The map is an approximate guide only. On the artist's entry there is a description of the work, contact details, directions and any variations to the opening times. A grey background indicates that artists are sharing a venue, with the directions to it at the top of the page. Detailed location maps can be found by looking at the individual Google maps on our website - every artist has one.

Every effort has been made to ensure the information is accurate, however if you are making a special trip, we advise you to check with the artist in advance to confirm details. Please be aware that if a venue does not have a house number; a sat nav or internet map may not take you right to the door.

Reference symbols used on the artists' pages are:

- C = Commissions undertaken
- T = Teaching, workshops, demonstrations or talks undertaken.
- D = Fully disabled access
- d = Partial disabled access
Not all venues have disabled access; **you can use the search filter on the website to find venues with disabled access** or contact the artist for more information.
- P = Preview evening on Friday 27th May - all are welcome (the website also has a search filter to find all artists who are holding previews). You can email/phone the artist in advance for times and details if you wish to attend a preview evening.

All venues will be open over the Weekend. 28th and 29th May 2022.

Open this brochure on your phone by scanning this QR code.

It will take you to our website.

Scroll down and tap the two links for the brochure and the map.



Gallery in the Gardens

The largest selection of locally made art & craft in the High Peak.
Over 40 artists & makers.

Located in the Pavilion Gardens -
23 acres of beautiful parkland.

Open daily, check website for details.

'Art in the Octagon' 13th-15th July,
New Free Event - exhibition,
demonstrations & workshops.
Pavilion Gardens, Buxton

FREE ENTRY

- f HighPeakArtists
- t @HighPeakArtists
- @ galleryinthegardens



High Peak Artists @ Gallery in the Gardens
Pavilion Gardens, St John's Rd, Buxton, SK17 6BE
Tel: 07849 673058 galleryinthegardens.co.uk



BANKS MILL OPEN STUDIOS

25-27 Nov 2022
Fri: 5-8pm; Sat & Sun: 10am-5pm

Banks Mill Studios,
71 Bridge Street,
Derby, DE1 3LB

01332 597866
banksmill@derby.ac.uk
banksmill-openstudios.co.uk

Great Dome Art and Design Fair

**PEAK
DISTRICT
ARTISANS**

**£2
Entry**

29th - 31st July 2022
Friday - 6:30 pm - 8:30 pm
Saturday - 10 am - 5:00 pm
Sunday - 10 am - 4:30 pm

Original Artwork • Unique Gifts
Free Demos • Postcard Raffle

Browse and buy from Peak
District artists, designers and
makers, together in one venue.

Devonshire Dome
Buxton
Derbyshire
SK17 6RY

peakdistrictartisans.co.uk

THE GALLERY

12 High Street, New Mills, SK22 4AL

Independent Artist Cooperative



24 LOCAL ARTISTS & MAKERS

Art Jewellery Ceramics Gifts Cards

Mon Tues Fri Sat 10.00 - 4.00
Thurs 10.00 - 5.30

**Open Sun 29th May 10.00 - 4.00 for
Derbyshire Open Arts**

  @newmillsgallery 01663 309039

Birchwood Moor Art Gallery



Large choice of original paintings available to view in gallery
Open by appt. even at short notice 07759595294
Birchwoodmoor House, Roston, Ashbourne, DE6 2EH
What3words-painters.botanists.posting
www.colinhallidayart.co.uk
email: challiday1964@btinternet.com



The Derbyshire Makers is a friendly, supportive and inspiring, creative community for Makers in Derbyshire who create beautiful products and run workshops to help others learn their craft.

Are you a Maker looking to join an inclusive creative community for support, friendship and collaboration?

OR

Do you enjoy learning new crafts, visiting Artisan fairs and buying beautiful gifts?

Visit our website on how to JOIN OUR COMMUNITY OR SIGN UP to receive details of upcoming Artisan Fairs, 'Have a Go' Workshops and lots more straight into your Inbox!!

CONNECT WITH US AT...

www.thederbyshiremakers.co.uk

FOLLOW US ON...

Facebook and Instagram



www.thederbyshiremakers.co.uk



Over 200
Affordable original
paintings to view,
most framed and
ready to hang.


**John
Connolly**



Individual Tuition
Open all year round
to visitors
by appointment

Open Studio 27th May to 29th May 2022 10am to 5pm each day

Also open all year round by appointment. Call 07967 316622
www.connollyart.com

Ormscliffe Studio/ Gallery - 16 Langwith Road, Bolsover, Chesterfield, Derbyshire. S44 6HQ



**VISIT THE
LOUISE JANNETTA
GALLERY & STUDIO**

24 Dale Road, Buxton,
Derbyshire, SK17 6NL

please tel in advance to avoid dissapointment

**OPEN EVERY SATURDAY
10 am to 4 pm**

www.louisejannetta.co.uk
07931821191

enquiries@louisejannetta.co.uk

**Workshops
Commissions
YouTube Tutorials**





**HADFIELD
OPEN ART
SHOW**

10TH EXHIBITION

**Saturday 28th May
to Saturday 4th June**

**Hadfield Hall & The Craft Barn
Station Rd, Hadfield**

DERBYSHIRE
County Council
Improving life for local people

High Peak Borough Council
Working for our community

www.hadfieldhall.wordpress.com
hadfieldartshow@gmail.com
 Hadfield Open Art Show

Exhibition of children's
& adults' artwork

Artists in Residence:
**Karen Heywood
& Greg Williamson**

Hadfield's First
Pro Loco Competition

Beginners' workshops
in oils, acrylics, pastels &
portraiture

Family workshops
& children's Art Trail

Talk by **Ghislaine Howard**
(The Human Touch)

Talk by **Michael Howard**
(Walking on Fire)



ART AND ARCHITECTURE TRAIL

MELBOURNE FESTIVAL...

17 - 18 September 2022

ART - ARCHITECTURE - FOOD - MUSIC

Art to enjoy, to intrigue and to take home...

Family friendly with 150 artists in 70 venues

melbournefestival.co.uk

Creative Melbourne Gallery, Church Street, Melbourne DE73 8EJ



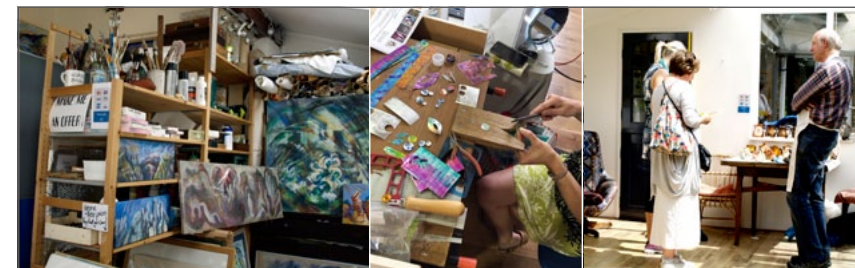
See behind the scenes

If you enjoy rolling your sleeves up, multi-tasking and generally being helpful why not enquire about volunteering with our friendly, hands-on committee?

The event takes place annually and the management of it involves lots of organisation, promotion, some technical skills and distribution.

If you have marketing skills or technical skills we would love to hear from you

To find out more email: info@derbyshireopenarts.co.uk



The Derbyshire Open Arts Experience - visiting an artist's studio

The aim of Derbyshire Open Arts (DoARTS) is to make more people aware of the vast range of arts produced by artists in Derbyshire. The annual event takes place over the late May bank holiday and offers members of the public a chance to visit studios and other venues where artwork is being exhibited. The artists are keen to engage with visitors; they love discussing their work, skills and techniques.

Many artists exhibiting from their own studios are able to show people where and how they make work - this can give the visitor an interesting insight into the whole creative process.

The Derbyshire Open Arts Team would like to reassure visitors that the artists are friendly and welcoming - they want people to look at their work, engage in conversation (should visitors want to) and make it clear that there is no obligation to buy.

DoArts is not least a social experience based on the appreciation of art and how it is produced. As art is very personal and subjective, artists are aware of the fact that different people like different things. So, if you are visiting venues during the event please don't be shy or feel awkward. Talk to the artists, ask them about their work and enjoy the experience.

Derbyshire Artists Quotes

- Plenty of discussion between myself and the visitors. I thoroughly enjoyed the event and was very pleased to sell a couple of pieces of my work. The interaction I was able to make between myself and the visitors was very important to me as an artist.
- It isn't all about sales. It's a community event and by working together we make art available for all to enjoy.
- First time exhibiting as part of Derbyshire Open Arts and so very beneficial to engage with customers and allow them to view my work in person, many for the first time.
- The event was exhilarating and exhausting, great fun but hard work. Excellent opportunity to meet face-to-face with visitors and discuss my artwork and means of working.





Tributes to David Hoodith by Ruth Marsden and Andy Rogers

'What paintings have you got ready for Derbyshire Open Arts this year Dave?'

'They are still in the (paint) tubes,' says Dave with a smile and a shrug.

I first knew Dave as a picture framer and he was always a rather busy one, especially at this time of year, prioritising other peoples framing needs over his own work, often toiling late into the night. Yet every year he produced fantastic new paintings. 'Watch it, the paint might still be wet' he would say.

This year DOA at 67 Mellor Road we will be without our dear friend and colleague David Hoodith, who died suddenly on October 19th 2019. It has been a hard decision to go ahead with the exhibition without him this year, but I think he might be cross if we didn't.

Dave first took part in DOA in 2007 and joined us at 67 Mellor Road in 2008, where he has shown his work every year since. We watched his work develop and grow, from his accomplished watercolour paintings to realising a long held ambition - his recent striking, semi abstract cityscapes. Although he had a tendency to underestimate it, Dave possessed a remarkable talent as an artist. He was also a joy to be around and brought so much fun and laughter to not only this event, but to all his friends and everyone who knew him.

Woman: 'I would really like to buy that print of yours, but I haven't enough money on me'

Dave: 'How much have you got in your purse?'

Woman fishes for her purse and produces a five pound note.

Dave: (handing over the print) 'It's yours then!'

That is just one example of Dave's generosity. Dave was many things, not only generous, but kind, funny, a reader, a thinker, a man with a wide variety of interests and of course a gifted artist.

A bit of a Leonardo really, only I don't think Leonardo would have been half as much fun!

We are honoured to be showing some of Dave's work at 67 Mellor Road this year and although we will miss him dreadfully, our old mate will be with us in spirit.

Ruth Marsden.



Early Days in Derbyshire Open Arts

"An artist, seeing our table-full of brochures, told us his name was David Hoodith, and expressed disappointment that here was a new arts event he hadn't heard of, so couldn't take part. Instead, he jumped at our invitation to join the committee, and was hugely helpful in those early years in developing support and interest in our annual event, mainly in his home town of New Mills Resulting from the input and enthusiasm of David and his fellow-artists, the arts scene in New Mills has burgeoned into the thriving entity that it is today."

Andy Rodgers, former Chair, Derbyshire Open Arts.

Ally Rodgers, aided by her husband, Andy, instigated Derbyshire open Arts in 2006 and first met David at an event at Buxton Dome.



Cat and Fiddle



Mont Saint Michel



City Scape 2019



Island Series

Victoria Hall Artists, Glossop

From the main junction in central Glossop travel along High Street West in the direction of Manchester. At the next set of traffic lights turn right onto Arundel Street. Continue for about 400m, Victoria Hall is on the right-hand side.

ADRIAN HOLT: I make an eclectic and unusual range of hand-built ceramics and mixed media sculpture.

CHRIS TAYLOR: Calligraphy and Hand-lettering, carried out in a variety of media, often inspired by the natural world.

DENISE HEYWOOD: Wild flowers and hedgerows painted with watercolour and mixed media in a semi-abstract style inspired by Glossop countryside.

GRAHAM LARKIN: Self-taught artist and musician using both traditional and digital mediums. Profits go to registered charity 'Oasis Relief Zambia'.

HEATHER JONES: I am a mixed media artist. My work is both figurative and abstract encompassing bold colours, collage and mono printing. My work is quirky and playful.

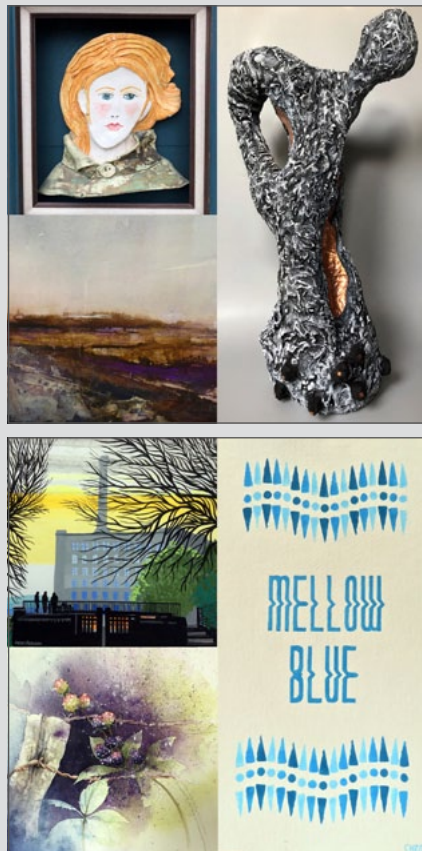
HELEN CUNLIFFE: Using stoneware and porcelain I produce hand-built functional and decorative pieces. Slips, oxides and minimal glaze is used to emphasise textures.

JEAN HOBSON: Paintings, prints and drawings of city and landscapes.

JO KISBY: Glossop artist, specialising in oil and charcoal portraits.

KAREN HEYWOOD: I try to capture the essence of my subject; whether it be wildlife, landscapes or portraiture. Recently I have been painting animals, mainly in aqua-oils.

Victoria Hall, Talbot Street, Glossop SK13 7DQ
07890 799123
adrian.holt@talktalk.net
<http://www.facebook.com/adrianholtceramics>



Victoria Hall Artists, Glossop

From the main junction in central Glossop travel along High Street West in the direction of Manchester. At the next set of traffic lights turn right onto Arundel Street. Continue for about 400m, Victoria Hall is on the right-hand side.

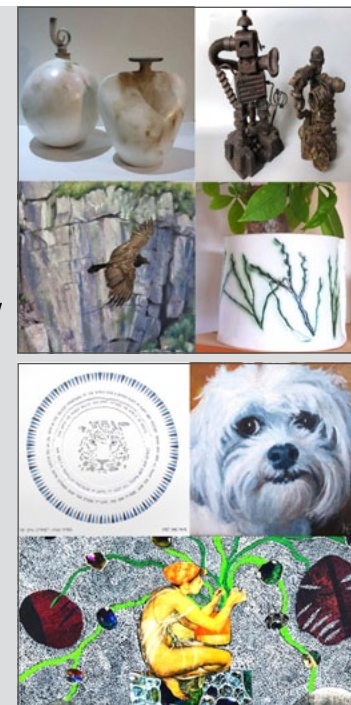
ORGANIC CERAMICS: Small batch, hand-built ceramics by Lynne Taylor inspired by nature. My Botanical Range brings the essence of nature a little closer to us in our homes.

PHIL CUNLIFFE: My work usually covers Derbyshire. I begin with an initial field sketch or painting and follow this up in my studio. I enjoy using a variety of media.

PIPPA HICKS: Abstract art exploring the use of colour to create joy in a variety of subject matter from landscapes to wildlife.

SUSAN EVERSFIELD: My love of travel in many parts of the world is often reflected in my work, using a variety of media to explore one idea.

Victoria Hall, Talbot Street, Glossop SK13 7DQ
07890 799123
adrian.holt@talktalk.net
<http://www.facebook.com/adrianholtceramics>

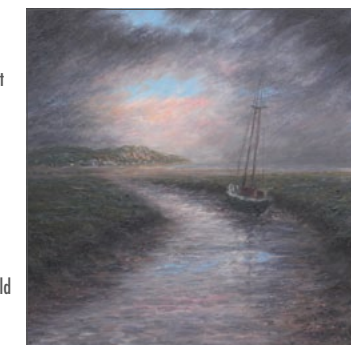


Simon Parkin

Expressive paintings inspired by rugged wilderness and sublime dramatic light of the Peak District alongside paintings of the raw primal power and mystery of the sea as well as a room devoted to the vibrant colour and life of India. Studio Gallery has three floors.

43 High Street East, Simon Parkin Studio Gallery, Glossop SK13 8PN
44784 2151416
simon@simonparkin.co.uk
<https://www.simonparkin.co.uk/>

1 minute from the central set of traffic lights in Glossop, head towards Sheffield on the A57, I am on the main Street next to the Photography shop opposite Esso Garage. Saturday 4th June 11am -5pm.

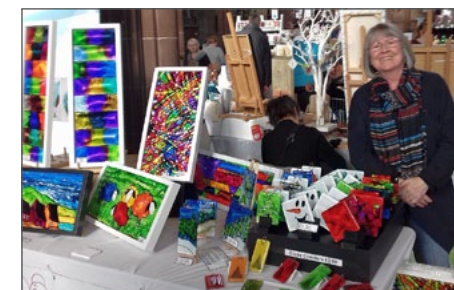


Gerry Darbyshire

The beautiful thing about using alcohol ink is that things never turn out exactly the same. The possibilities are endless. I use alcohol ink on glass and tiles. I have created some bigger pieces on toughened glass, which can be used as a table centre-piece.

14 Lower Bank Glossop SK13 8PY
07760 122183
gerrydarbyshire@gmail.com

From the centre of Glossop take the A57 towards Sheffield. second RT (Milltown). Drive past the Prince of Wales pub. Keep going past the old factory. Second right is Lower Bank.



04

CTd

Glass, Wood & Wool

Glassmaker Kay Stowell, Woodturner Colin Mail, and Textile Artist Linda Moss display individual works and innovative collaborations, from light-reflective panels and humorous animals, hardwood bowls and sticks, to hand-woven hangings, book making accessories and local landscapes. Daily workshops/demonstrations; refreshments in quirky artist's home.

6 Cliffe Road, Glossop SK13 8NY
07860 940740
kay@simplyglassuk.co.uk

Bottom of Cliffe Rd at junction with Cross Cliffe. (very narrow, so park by Old Mill opposite Brook View.) Easy walk from town centre, past KwikFit, turn right off A57 onto Milltown, 400 yards up hill. Venue will be signposted.



05

CD

Hayfield Artists at Ashlar Studio

Ashlar is next to the Pack Horse pub. Parking is on Market Street. Walk up the drive to Ashlar which is a modern, architecturally designed house with solar panels. Thursday 2nd June - Sunday 5th June.

JO TOFT ceramicist - Hand built stoneware ceramic sculptures inspired by the forms, textures and colours of the natural world.

DAVID TOFT - Photography aiming to capture the diversity of people, places and wildlife around the world, caught in a single instant.

ANN LYON Hand-built stoneware and earthenware ranging from traditionally shaped pots for home and garden to figures and heads.

FAITH FRASER Tiles and figures inspired by art, theatre and natural forms.

SUSAN McCALL Painter - Energetic semi-abstract paintings inspired by the physical experience of being in the landscape.

Market Street, Ashlar Hayfield, High Peak SK22 2EP
07790 770980
mccallhayfield@gmail.com
<http://hayfieldartists.co.uk>



06

CP

Elephantstones Gallery

Elephantstones is home to local landscape photography by Simon Bridges & illustration by Eve Lumai Bridges, Scandinavian collectables, Japanese homewares and ethically sourced, handmade gifts, candles and homewares. The gallery also exhibits works by Harry Ousey, who is considered significant in post-war Abstract art.

6 Church Street, Hayfield SK22 2JE
01663 742 835
whatto@elephantstones.co.uk
<http://www.elephantstones.co.uk>

Located in the centre of Hayfield opposite the post office and down from the chippy, just up from the church and across the road from Millie's Cafe!



07

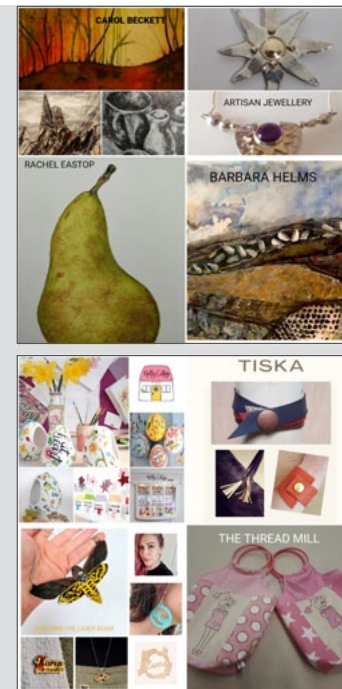
CD

Hayfield Artists with Bank Vale Artisans

Bank Vale Mill is situated on Swallow House Lane, Hayfield. On the opposite side of the road to Hayfield Primary School, before the bridge and Pike Close.

The Thread Mill Specialising in sewing and unique gifts for children. Lady and the laser beam Specialising in laser cut gifts, including jewellery made from wood and acrylic. Tiska Working in Leather to create unique gifts including Scandinavian inspired items. Holly Cottage studios Inspired by nature, using screen printing, clay and paint as well as textiles. Rachel Eastop Botanical illustration, fine art, illuminated lettering and mixed media. Stephen Grieve Creating unique jewellery enhanced with copper and gold Barbara Helm Various media creating bold and expressive work. Carol Beckett Artist/Printmaker/Textiles Designer

First Floor, Bank Vale Paper Mill, Swallow House Lane, Hayfield SK22 2HB
07807 659676
thethreadmillhayfield@gmail.com
<http://www.thethreadmillhayfield.com>



08

Cd

The Loft

Carly's Modern, abstract, stone sculptures influenced by forms found in nature and a career in architecture. Using mallet and chisel she gradually chips away at the stone, the method of carving and the peculiarities of the stone influencing the final form. Andrea Joseph (illustrator) will be joining Carly at The Loft.

The Loft, Hayfield SK22 2LP
07968 027756
carly@carlygrice.com
<http://www.carlygrice.com>

Parking is available at the Sett Valley Trail car park on Station Road. From there, cross Chapel Road (A624), turn right, up Church Street then left onto Valley Road. The Loft is on your right. If you aren't able to visit during the 28th/ 29th May, then please get in touch to make an appointment.



09

a

CTd

67 Mellor Rd, New Mills SK22 4DP

From Market Street, New Mills, continue on to Spring Bank for approximately 0.3 miles. Turn left on to Mellor Road. The venue is on your left, 100m past the church. A warm welcome and complimentary delicious homemade refreshments.

Anne Humberstone

Using textiles and stitch instead of canvas and paint, my work is inspired by the natural world. Techniques such as heat manipulation, collage and print allow me to play with textures and colour.

07926 267712
anne.owl@btinternet.com



09

67 Mellor Rd, New Mills SK22 4DP

From Market Street, New Mills, continue on to Spring Bank for approximately 0.3 miles. Turn left on to Mellor Road. The venue is on your left, 100m past the church. A warm welcome and complimentary delicious homemade refreshments.

b

Jenny Rothwell

Handmade jewellery reflecting aspects of the English countryside, including hand-painted anodised aluminium and textured silver.

07530 097834

rothwelljenny@gmail.com

www.etsy.com/uk/shop/JennyRothwell



c

Ruth Marsden

Paintings and limited edition prints. Portraits of rock icons and other famous people. Still life paintings of everyday objects.

07779 724330

ruthmarsden1@btinternet.com



d

Jo Basnett

Drawing on my love of nature and organic form, my work has evolved using underglaze and oxides: burnished and barrel fired, often incorporating 24 carat gold to give them a contemporary twist.

07765 674499

jobasnett@gmail.com



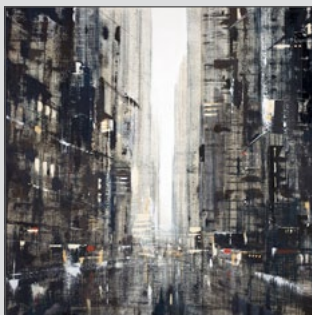
e

David Hoodith

Paintings and prints by the late David Hoodith. Urban explorations capturing the chaotic light, colour and movement of city life, balanced by paintings of the relative peace and harmony of life in the rural Peak District.

07779 724330

ruthmarsden1@btinternet.com



10

Alison Vasey

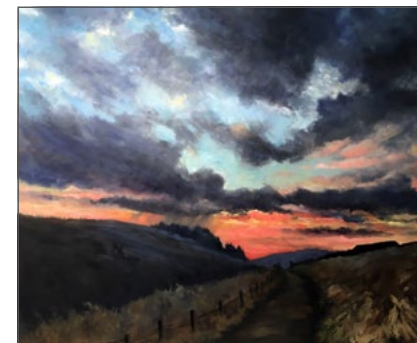
Alison paints in oils, and is focused on capturing transient light effects across land and sea, creating mood and atmosphere in her paintings which are inspired by walks in the Peak District and beyond.

49 Mellor Road, New Mills SK22 4DP

07967 325367

alivasey@gmail.com

When coming into New Mills along Union Road, turn left along Albion road, right at the roundabout onto Market Street, then carry straight on along Spring Bank turning left onto Mellor Road. You'll see the balloons on the left!



11

Providence Church, Mellor Road, New Mills SK22 4DP

7 artists venue. From Market Street in New Mills, continue up onto Spring Bank Road past another church. Down the hill and turn left onto Mellor Road, our church is on the right. Parking at back/on road. Cakes and refreshments! Saturday 28th 10am - 5pm Sunday. 29th 11.15am - 5pm.

a

Carl Longmate

I'm a landscape painter, mainly painting with oil paint.

07734 388023

Longmateart@gmail.com

http://www.longmateart.com



CTd

b

Penny Withers

Penny Withers has a distinctive personal style in throwing and glazing contemplative ceramic vessels, as well as pots to pick up and use every day. Penny's palette of geological materials reflects the landscapes that inspire her.

07510 668585

pennywithersceramics@gmail.com

https://www.pennywithersceramics.co.uk



D

c

Cath Dunn

Cath Dunn is an award-winning painter & printmaker inspired by the Peak District and beyond. Her primary interest lies in pattern and semi-abstraction, and the rhythm of specific landscapes. She paints in oil, watercolour and mixed media.

07720 299984

cath@cathdunn.me.uk

http://www.cathdunn.me.uk



CD

11

d

CTD

e

CTD

f

CD

12

CTd

Providence Church, Mellor Road, New Mills SK22 4DP

7 artists venue. From Market Street in New Mills, continue up onto Spring Bank Road past another church. Down the hill and turn left onto Mellor Road, our church is on the right. Parking at back/on road. Cakes and refreshments! Saturday 28th 10am - 5pm Sunday. 29th 11.15am - 5pm.

Andrew Brooks

Andrew Brooks is a photographer, artist and film maker. His photographs are created by combining many images to build detailed artworks that have a painterly feel. His work is inspired by the natural landscape, architecture and history of the Peak District.

07816 139846

info@andrewbrooksphotography.com

http://www.andrewbrooksartist.com



Adele Kime

Handmade jewellery inspired by organic forms and patterns. Colourful, hand painted, anodised aluminium decorated with imagery from nature, alongside an etched silver range. Taught jewellery making for 20 years and runs workshops/courses at her canal side studio. Commissions welcome.

07891 572677

adelekimejewellery@gmail.com



Emma Sidwell

Emma works from her imagination, primarily in either highly detailed pen or watercolour. She creates worlds rich with characters, constructs, and creatures - some dark and some whimsical. Her resin jewellery showcases individual details from these images.

Mellor Road, Providence United Reformed Church, New Mills SK22 4DP

447902 808105

elliadesigns@gmail.com

https://elliadesigns.weebly.com/



Joanna Allen

Joanna Allen's mixed media artworks and hand coloured intaglio prints inspire her designs. Her collection of luxury romantic silk scarves is inspired by a love for Shakespearean tales, romantic florals and magical creatures. All Joanna's scarves are digitally printed onto 100% silk in the UK.

30 High Street, New Mills, High Peak SK22 4AL

07505 508573

joannaallen7@hotmail.co.uk

http://www.joannaallen.co.uk



30 High Street is an old Victorian shop with a large window. High Street is off Market Street in New Mills. Number 30 is further down on the right hand side just after the Book Shop, Gallery and Haberdashery. I will be open on the two days, 10 am until 5 pm.

13

CTPd

The Textile House

From the centre of New Mills take Market St then Spring Bank. After 1/4 mile turn left into Mellor Rd. Stafford St is first on the right just before the Providence Church. Please park on Mellor Rd.

The Textile House is a group of friends who all create beautiful textile based work. Val, Debbie and Alison make quilts, wall hangings, bags, cards and quirky small gifts. Sheila embroiders bright, silky and beaded jewellery, pictures, bags and cards. Joy creates warm and snuggly shawls and jackets from unusual hand dyed yarns. Joy spins, weaves, crochets and knits and along with Sheila is a member of the Wiseheart and Wild artist cooperative in New Mills.

8 Stafford St, New Mills SK22 4DR

01663 749741

valcopestake@hotmail.com



14

d

Gilly Gostick

Gilly will show original drawings and paintings in various media, plus some work in progress, - inspired by nature, walking, gardening, and domestic life. Limited edition prints and art cards will also be for sale. Proceeds to Blythe House, Ashgate Hospice and High Peak Foodbank.

57 Hyde Bank Road, New Mills, High Peak SK22 4NH

07880 763388

gillygostick@gmail.com

Hyde Bank Road is opposite the Co-op Supermarket. Limited on-street parking - please use town car parks. Front Window of 57 Hyde Bank Road is at pavement level. Studio at 56 Hyde Bank Road is through gates down gravel drive. Throughout the Weekend Main display in the front window of 57 Hyde Bank Road, New Mills, High Peak SK22 4NH Also - Saturday 28 May : 11am - 3pm If Covid allows : Open Studio - on Driveway at 56 Hyde Bank Road, New Mills, High Peak SK22 4NH.



15

CTPd

Pottery & Pine Studio

Natasha Lolljee's work manifests in many forms; crafts, installation photography, sculpture, and art, inspired from the vale to the sea. Scruffy Dog Creations aka Ruth Taylor - Wearables to household items and yarn art. Inspired by life outdoors, cycling and the natural world around her.

Spinnerbottom, Birch Vale SK22 1BW

07900 993268

scruffydogcreations@gmail.com

As Station Road crosses the river and becomes Spinnerbottom the Studio is on the left opposite Crescent Row. Between Sett Valley Cafe and The Sycamore.



16

Harry Frost

I am inspired by the natural landscape, particularly my emotional response to being immersed in the world of land, sea and sky. Working from memory, I create expressive oil paintings evoking moods or atmospheres suggestive of a sense of place and time.

Woodbourne House, Woodbourne Road, New Mills SK22 3JX
07456 767977

harry.frost@acf-consulting.co.uk

<http://www.harryfrost.wixsite.com/harryfrostartist>

Woodbourne Road is situated off the A6 at the traffic light junction with the A6015 (Albion Road) for New Mills. Travel up Woodbourne Road to the very end. Woodbourne House is the last house on the left.



17

61 Whaley Lane, Whaley Bridge SK23 7BA

From the station in Whaley Bridge continue up Whaley Lane. No 61 is on the righthand side just after Hockerley Lane. Parking possible on Whaley Lane or further down Hockerley Lane.

a

Sally Wilson

I use free motion embroidery and appliqué techniques with both upcycled and hand dyed fabrics to create lampshades and textile pieces.

07592 001088

sallyannewilson@yahoo.com



b

Rob Wilson

Rob combines acrylic, watercolour and ink with dress patterns and magazine print before adding lines of stitching to create rich, atmospheric paintings.

07801 813049

rob@robwilsonart.co.uk

<http://www.robwilsonart.co.uk>



c

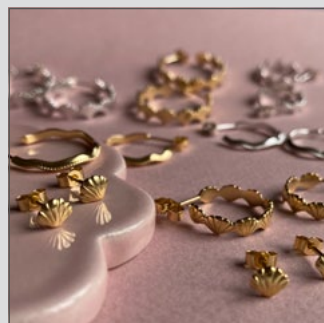
Rosie Kent

The Rosie Kent brand handcrafts lavish textures and deliciously shaped jewellery. We strive to create unique timeless pieces that are elegant but most of all comfortable to wear all day long. Each piece is handmade by a very small team in our Peak District studio.

01616 375820

hello@rosiekent.com

<http://www.rosiekent.com>



17

61 Whaley Lane, Whaley Bridge SK23 7BA

From the station in Whaley Bridge continue up Whaley Lane. No 61 is on the righthand side just after Hockerley Lane. Parking possible on Whaley Lane or further down Hockerley Lane.

d

Son of Son

Son of Son: Modern folk through paper and ink. Bright bold and naive layering detail on simplicity. Ranging from fantastical animals to brutal graphic other world landscapes inspired by my recent move back to the Peak District. Available as originals, prints and clothing.

07538 701226

sonofsonofson@gmail.com

<http://sonofson.com>



18

Tracey Coverley

Textural fine art using fabric and thread only. Using a mixture of techniques to manipulate recycled material to produce '2D' figurative works with a sculptural form.

9 Lower Macclesfield Road, Whaley Bridge SK23 7DD

07708 081842

traceycoverley@gmail.com

<http://www.handmadeinhorwichend.com>

Located at the bottom of Macclesfield Road in Horwich End, Whaley Bridge. Just look out for the big white hippo, you can't miss her! No parking at venue.



19

New Horwich Studios

Tamsin Cunningham and Elizabeth Swift will be exhibiting a dynamic range of mixed media and textiles. Materials used will consist of fleece, handmade paper, fabric, pen, acrylics and ceramics. Inspired by animals, landscapes, architecture, patterns, textures, repetition and lots more!

20 New Horwich Road, Whaley Bridge, High Peak SK23 7LG

07977 519843

tamsinc@yahoo.co.uk

From Whaley Bridge, turn left up Old Road at the Bike Factory and then take the 2nd left up New Horwich Road. Coming from Chapel Road, turn on to Old Road at Nimbus Antiques and then 2nd right.



20

Emma Hoten

I use oil painting as a way to visually translate emotional connections to the landscape around me. I begin with blocks of colour masses and building layers of thicker paint, often returning to the work time and time again.

Barnfields The Wash, Chapel-en-le-Frith SK23 0QL

07946 362942

emma.hoten@icloud.com

<http://www.emhotenart.com>

Highly recommend using what3words app with competent.reset.hobbit in order to find the studio as the postcode covers a wide area. Approaching from Chinley Chapel direction, go left over the railway and Barnfields is 2nd drive on your left.



21

CD

Peak Vision Arts

The venue 89 Market Street, can be found just beyond the roundabout at Morrisons as you go through Chapel from Whaley Bridge to Buxton. It is on the right opposite the carpet shop. Parking on Market Street or nearby Morrison's.

Peak Vision Arts is a group of artists living and working in and around the town of Chapel-en-le-Frith, in the High Peak, Derbyshire. The group was formed four years ago with the aim to create and support art activity in the local area. There are six versatile members creating 2D and 3D art all inspired by the natural beauty of the High Peak. Julia Brownsword, Mixed Media Design 2D/3D; Jan Hoyle, Felt Art; Ingrid Katarina Karlsson, Mixed Media Art; Louise Neilson, Ceramics; Beverley O'Donoghue, Landscape Painting; Margaret Steeden, Textile Art.

89 Market Street, Chapel en le Frith, High Peak SK23 0JD
07399 405187
hello@ingridkarlsson.co.uk
<http://www.peakvisionarts.co.uk>



22

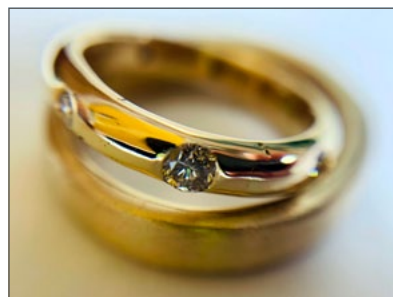
Cd

Colette Hazelwood

Designer Maker of Contemporary Jewellery, est 2000. Silver, gold & platinum jewellery, hand made, bespoke and regular ranges to buy ready made, in any size, with personalisation.

23 Eccles Road, Hillside Chapel en le frith SK23 9RP
07712 909793
info@colettehazelwoodjewellery.co.uk
<http://www.colettehazelwoodjewellery.co.uk>

Look for a white house. 200m from the junction at Crossings Rd, 300m, from the junction at Midland Rd.



23

Cd

Mark Brighton

I work primarily with colour pencils, but also with acrylics, gouache and colour markers. I like to combine figurative and non-figurative elements in my work, often layering these to create depth. My landscape paintings and drawings are inspired by the local scenery.

Isla Fine Art, 4B The Colonnade, Buxton SK17 6AL
07766 543772
mbrighton007@gmail.com
<http://isladirect.co.uk>

We are in central Buxton. From the A6, follow signs to the railway station and continue past the station to a roundabout. Take the first exit and we are about 400 yards on the right in the Cavendish Arcade.



24

CTD

Rebecca Clitheroe

My 'Hidden Histories' tell the stories behind historic buildings/landmarks and are created by a layering technique. Small black and white images relevant to the history of my subject are pasted on top of the sketch before the colour is applied, concealing them 'within' the illustration.

The Cavendish Arcade, Terrace Road Central Concourse, Buxton SK17 6BQ
07946 501489
rebeccaclitheroeartist@gmail.com
<http://rebeccaclitheroe.com>

The Cavendish Shopping Arcade has an entrance off Terrace Road (A515), and opposite The Slopes in the centre of Buxton, as the original Thermal Baths Building, it is easily found next to The Crescent Spa Hotel.



25

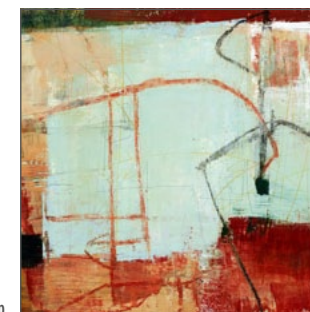
CTP

Lin Cheung

Intuitive mixed media abstract paintings. Inspiration is the archaeology of place and experience, stimulating imagination in the viewer through curiosity, evoking a sense of connection to history, place and people through oblique references of form alongside layering and texture in the painting.

87 Corbar Road, Buxton SK17 6RJ
07985 936393
linc.art@btinternet.com
<https://linc-art.com/>

From the town take Manchester Road, the A5004. Up the hill turn right onto Corbar Road. Number 87 is over the brow of the hill on the left. Shared entrance with 85, up the steps right through gate in hedge. Additional Opening - Friday 27th May 2.30pm til 7.30pm.



26

a

CTd

86 Nunsfield Rd, Buxton SK177BW

Follow the studio signs and from Lightwood Rd, turn up the hill onto Nunsfield Rd. We are near the top, on the left with a blue door and bench.

Pam Smart

Pam is an award winning artist creating vibrant architectural paintings in acrylic and watercolour. Her graphic style combines intricate patterns with a kaleidoscope of colours. Come and see her working in the studio and enjoy tea and cake in the garden to support local charity.

07736 353295
pam@pamsmart.co.uk
<https://www.pamsmart.co.uk/>



b

Cd

Kathryn Watson

Kathryn makes sculptural ceramics for the garden and home. All her work is hand built creating unique organic forms. Architecture, prehistoric carvings, rock formations in the Peak District and the flora and fauna of her garden all inspire. Kathryn works from her studio in Sheffield

07891 906569
kathrynwatsonceramics@gmail.com
<http://www.kathrynwatson.co.uk>



26

c

CTd

86 Nunsfield Rd, Buxton SK177BW

Follow the studio signs and from Lightwood Rd, turn up the hill onto Nunsfield Rd. We are near the top, on the left with a blue door and bench.

Sarah Morley

I am widely known for my expressive textured landscapes of Derbyshire and beyond and for my depictions of the sea. My work is semi-abstract, occasionally abstract, and is drawn from observation, trying to preserve the emotional memory of the experience and balance tone and colour.

07946 432818

s.morleyart@gmail.com

<https://www.sarahmorleyart.com/>

27

CT

Sandra Orme & Natasha Braithwaite

A studio based exhibition with dramatic artwork from an award winning artist shown alongside evocative black and white darkroom based photographs. Sandra and Natasha's work compliments and contrasts each other's in their mutual exploration of wild weather over land, sea and sky.

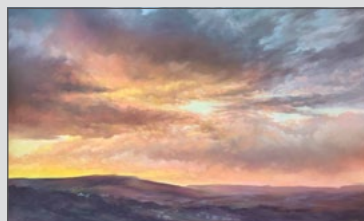
26 Rock Bank, Sandra Orme Sky Studio, Buxton SK17 9JF

07748 840078 / 01298 22538

sandra@sandraorme.co.uk

<http://www.sandraorme.com/>

Drive out of Buxton on A515/London Road, turn right at junction after hospital (Harpur Hill) continue uphill until Parks Inn, turn right onto Grinlow Road, Rock Bank is second left off Fiddle Street. Parking on Grinlow Road or Harpur Hill Road.



28

CPd

Jeff Perks

Ceramic sculpture is an area that is relatively new. Making figures out of clay built from slabs, exaggerating but not losing the likeness of the original is a difficult art. My work combines craft with humour and hopefully will make you laugh.

The top studio, Manchester Road, Opposite No 3, Tideswell SK17 8LL.

07549 923275

jeff@jeff-art.com

<http://www.jeff-art.com>

Approaching Tideswell from Buxton take the left-hand fork at High Nelly's Cafe, proceed to Market Square and park. Proceed by foot another 100 yards to the studio located on the left-hand side of Manchester Road opposite No 3. Additional Opening - Monday 30th May to Sunday 5th June.



29

CD

Alison Wake

Inspired by the Peak District landscapes surrounding my home, my textile artworks are hand stitched, predominantly using locally sourced, hand dyed wool. With a free hand technique I paint with thread and yarn. Cognissart - fine art in stitch.

1 School View, Flagg, Buxton SK17 9QT

07376 492657

alison.wake@cognissart.co.uk

<http://www.cognissart.co.uk>

Flagg is signposted off the A515 between Buxton and Newhaven. I am situated on Main Road, at the junction with Mycock Lane and opposite Flagg Nursery School. For direction search Cognissart on Google Maps. Do not use postcode in SatNav. 'Three words' location is 'inserted. poetry.tuned'.



30

CTPd

Terry Baker

Terry produces digital artwork deeply influenced by the School of Surrealism. His inspiration comes from the work of Max Ernst, Salvador Dali and Yves Tanguy. He is fascinated by recent concepts in physics and astronomy and seeks to introduce aspects of these into his work.

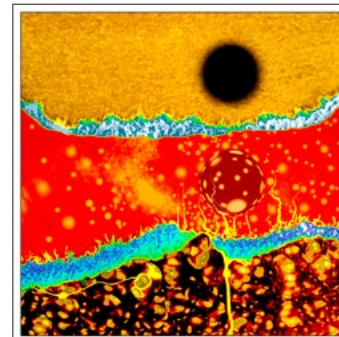
Ivy Cottage, Sheen, Buxton SK17 OES

07807 664529

info@artofphoto.co.uk

<http://www.artofphoto.co.uk>

Ivy Cottage is situated down a short track off Pown Street on the north side of the village. It is located between Peakstones Farm and Manor Farm. The studio is open on a regular basis throughout the year.



31

CTd

Hope Valley Glass Art

Hope Valley Glass Art combines fused and stained glass with printmaking techniques to create unique contemporary hand-made fused and stained glass art at affordable prices. Each piece of glass art is both visually stunning and unique, so no two pieces are exactly the same.

Coggers Lane, Ash House, Hathersage S321AL

kathy@hopevalleyglassart.co.uk

<http://www.hopevalleyglassart.co.uk>

In the centre of Hathersage just after the George Hotel, turn right up the hill onto Jaggers Lane, then right again up Coggers Lane. Ash House is on the left before Ranmoor Drive.



32

c

Lynne Wilkinson

Award winning artist, obtained a BA Honours Degree in Painting and Printing. I paint most days, working from my studio on the fringe of the Peak District. This rural environment provides my artistic stimulation to translate a passion for nature onto the canvas.

Summerley Hall, Summerley Lower Road, Apperknowle, near Dronfield S18 4BF

07811 153705

lynnewilkinson777@yahoo.co.uk

<http://lynnewilkinson.co.uk>

From Coal Aston take B5056 towards Eckington, turn Right onto Ash Lane before Wards Garden Centre, Turn Right after 500 metres onto Summerley Lower Road, down the hill, bear right at grass triangle and Summerley Hall is on the right.



33

a

d

48 Bents Lane, Dronfield S18 2EX

From the A61 Bowshaw Roundabout take the road to Coal Aston. At the next roundabout turn right up Dyche Lane, turn left onto Eckington Road. Take the first right onto Stone Road continue on Bents Lane to top of hill. Additional Opening - Monday 30th, Tuesday 31st May.

Bents Lane Artists

Cass Rawlings, Jeannette Jackson and Marion Annis all work across a wide range of media and processes, including stitched textiles, printing and mixed media.

01246 930621

cass.rawlings@aol.co.uk



33

48 Bents Lane, Dronfield S18 2EX

From the A61 Bowshaw Roundabout take the road to Coal Aston. At the next roundabout turn right up Dyche Lane, turn left onto Eckington Road. Take the first right onto Stone Road continue on Bents Lane to top of hill. Additional Opening - Monday 30th, Tuesday 31st May.

b

Steve Booton

Reduction fired wheel thrown ceramics with a Japanese Korean aesthetic

48 Bents Lane, Dronfield S18 2EX

07706 258604

stevebootonceramics@hotmail.com

<http://www.stevebootonceramics.com>

34

Val Hudson

Val's oil and wax paintings engage with the insubstantial, transient nature of existence as expressed through colour and abstract form, the elements, open spaces and the play of light. The paintings are textural, intimate and poetic and engage with the potential of emptiness and silence.

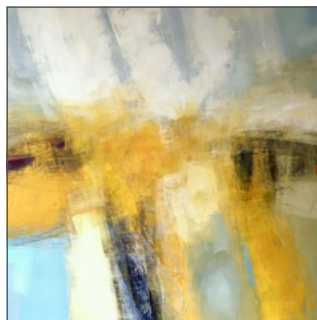
49 Springfield Rd, Barlow, Derbyshire S18 7SQ

07910 481810

valhudson@fmail.co.uk

<http://www.valhudson.co.uk>

From Sheffield take A621 to Owl Bar Roundabout, take the B6051 to Barlow. On entering the village take first right. From Chesterfield take the B6051 to Barlow. Drive one mile and take first left AFTER The Tickled Trout Bar Restaurant.



35

Jonathan Mason

Original Oil Paintings, Portraits and Landscapes on 9mm MDF board.

19 Midland Terrace, Chesterfield S43 2NH

07709 278909

jonathanmason000@gmail.com

<http://christianpaintings.wixsite.com/homepage>

Top half of closed off street.



36

The Clocktower, Chesterfield S43 2PE

From Chesterfield take A619 towards Brimington. Continue on A619 towards Hollingwood, Stavelly and Barrow Hill. Just passed Ringwood Hall Hotel, take a left into Private Drive. Continue to the end then turn left into Works Road. Clocktower on right.

a

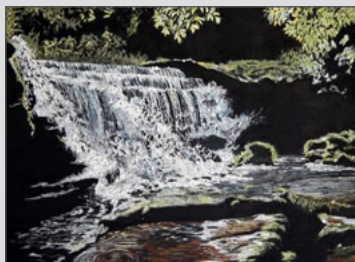
Lynne Evans

I am a Landscape Artist. I work in pastel on paper and acrylic on canvas. I take my inspiration from nature and the Peak District.

Studio 44

07729 480580

lynne.evans977@btinternet.com

<http://www.lyneevansartist.co.uk>

36

The Clocktower, Chesterfield S43 2PE

From Chesterfield take A619 towards Brimington. Continue on A619 towards Hollingwood, Stavelly and Barrow Hill. Just passed Ringwood Hall Hotel, take a left into Private Drive. Continue to the end then turn left into Works Road. Clocktower on right.

b

Cleo Swift

Cleo is a creative artist specialising in pet portraits, jewellery and small sculptures. As a creative she enjoys experimenting with new mediums when ever possible.

studio 6B

07726 297838

info@livingwaterartstudio.co.uk

<http://www.livingwaterartstudio.co.uk>

CTD

c

Patricia O'Brien

I am a fine art printmaker creating bold, contemporary, and colourful limited-edition linocuts and etchings to suit all tastes.

Studio 53

07794 040852

pobart4@gmail.com

<http://pobart4prints.co.uk>

CTD

37

Patricia Lane

Contemporary Landscapes in acrylics and mixed media, often using recycled items to create textures. My work is inspired by the beautiful Derbyshire countryside and the many lovely places I have visited. I try to recreate the atmosphere that inspired me, rather than create exact representations.

2 Elmtown Park Mews, Elmtown, Derbyshire S80 4GZ

07840 246833

mail@bradlane.co.uk

<http://www.patricialane.co.uk>

Take the B6147. The entrance to Elmtown Park Mews is about halfway between Bolsover & Clowne, my banners will welcome you. After the 2nd cattle grid, park on the right-hand side. Signs will lead you to my studio. My studio is available for visits at all reasonable times, please call 07840 246833 to ensure I am there.



CPd

38

John Connolly

Contemporary landscape artist working in acrylics and mixed media. Drawn towards the sea, forests and moorland, making the point of interest the horizon where the contrasts of colour, texture and ever changing light enable me to create work with drama and emotion.

Langwith Road, Bolsover S44 6HQ

07967 316622

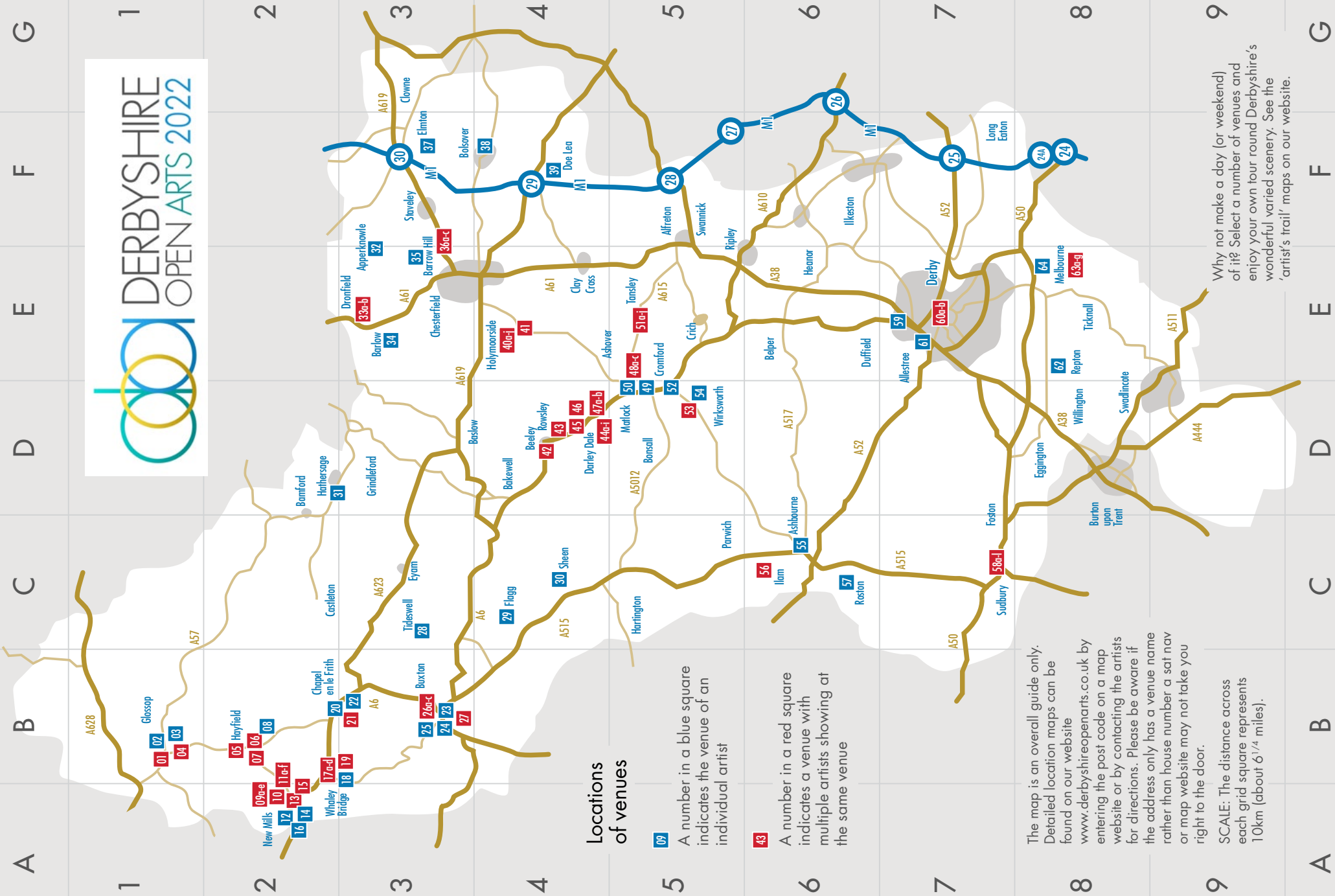
John@connollyart.com

<http://www.johnconnollyart.com>

Coming from Chesterfield, or Bolsover. Drive towards Hillstown traffic lights on Langwith Road. Address is Bright Green House on the left 100 metres before traffic lights. I am open all year round by appointment.



CTPD



Locations of venues

09

A number in a blue square indicates the venue of an individual artist

43

A number in a red square indicates a venue with multiple artists showing at the same venue

The map is an overall guide only. Detailed location maps can be found on our website www.derbyshireopenarts.co.uk by entering the post code on a map website or by contacting the artists for directions. Please be aware if the address only has a venue name rather than house number a sat nav or map website may not take you right to the door.

SCALE: The distance across each grid square represents 10km (about 6 1/4 miles).

Why not make a day (or weekend) of it? Select a number of venues and enjoy your own tour round Derbyshire's wonderful varied scenery. See the 'artist's trail' maps on our website.

39

TD

Gwenda Culkin

Mixed media inspired by Japanese Boro cloths; Indian/Nepalese textiles; folk art including Chilean Arperillas. Vintage fabrics are used to produce new pieces by patching, piecing and layering with added embroidery stitches. "Collecting" plays a big part of my practice: multicultural, vintage textiles, memorabilia and artefacts.

Doe Lea Centre, Mansfield Road, Doe Lea, Chesterfield S44 5PD
07780 435116
gwendaculkin@yahoo.co.uk

Just off Junction 29 of the M1 on A617 going towards Mansfield. Doe Lea is on the Pronto Chesterfield to Nottingham route. Additional Opening - the Jubilee weekend 10.00am to 4.00pm. Thursday 2nd June to Sunday 5th June.



40

a

CD

Vivienne Sillar

Work featuring birds, sea life and natural form is my starting point. Clay is burnished for a smooth finish then smoke fired in heather, fir cones and seaweed to produce a patina that is unique to each work. Vivienne shows in many galleries throughout Britain.

07814 733789
vivienesillar@gmail.com
<http://www.vivienesillarceramics.uk>



b

D

Valda Sampson

Using fabric and thread, or oil on canvas, Valda seeks to capture the colours and textures of her environment. Details in her garden or out in the surrounding countryside are all subjects that inspire her.

07729 604242
garyvaldasampson@btinternet.com



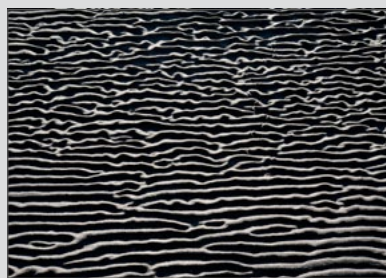
c

D

Jerry Daniel

Pictorial landscape photography focussing on minor features, which become the medium for my visual ideas. Influences include Op art, Romanticism and Graphic design. I will be exhibiting prints cards and books

01246 237937
jerrydaniel@uwclub.net
<http://www.jerry-daniel.pixels.com>



40

d

TD

Holymoore Rd, Holymoorside Village Hall, Holymoorside, Chesterfield S42 7DX

A619 Chatsworth Road out of Chesterfield, left at the sign to Holymoorside, Holymoore Road, travel for 1/2 mile and Village Hall is on the left before the Bulls Head pub. Village accessed also from Chesterfield-Matlock Road. Level access. Parking/ refreshments.

Susan Dodd

Works with collage and found objects to create intricate and ornate images, influenced by Victorian insect collections, shrines and reliquaries, and cabinets of curiosity.

doddart@outlook.com
<http://www.susandoddart.co.uk>



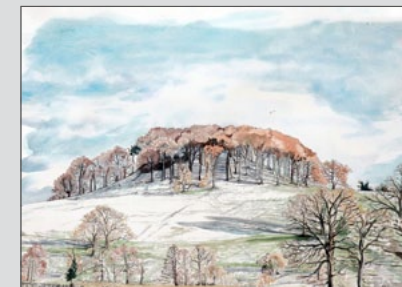
e

CD

Sarah E A Parkin

Watercolour landscapes of Derbyshire Dales. I aim to paint the 'less seen' vistas and to retain the integrity of the scene whilst responding in a sketched style, looking at the way the built environment sits within the landscape. Locally made prints, mugs and cards available.

07957 484977
sarah@sarahparkin.co.uk
<http://www.sarahparkin.co.uk>



f

CD

Alison Smith

Alison is passionate about creating intricate designs from sterling and pure silver. Her work is all handcrafted using fine saw blades and traditional techniques. She mainly takes her inspiration from nature and spends much of her time on commissions, transforming people's ideas into unique pieces.

07929 277504
alisonsmithsilver@gmail.com



g

CTD

Jo Keogh

Each unique piece explores the language of the vessel, remaining faithful to ceramic traditions but not convention.

07422 528857
jo@jokeghceramics.co.uk
<http://www.jokeghceramics.co.uk>



40

h

D

i

CTD

i

D

Holymoore Rd, Holymoorside Village Hall, Holymoorside, Chesterfield S42 7DX

A619 Chatsworth Road out of Chesterfield, left at the sign to Holymoorside, Holymoore Road, travel for 1/2 mile and Village Hall is on the left before the Bulls Head pub. Village accessed also from Chesterfield-Matlock Road. Level access. Parking/ refreshments.

Janet Barnes

I handbuild my work using a variety of techniques and use coloured slips to decorate them. I sometimes make sculptural pieces but mainly I produce one-off decorative pieces. I have two ranges at the moment, 'Stoneflow' and 'Tanglewood'.

07815 863749

jabarnes27@icloud.com

<http://barnesandbarnesstudio.com>



Caroline McFarlane

Portraiture, Landscapes and still life in pastel, oils and watercolour. Watch me create pencil portraits while you wait. Giclee prints and greetings cards. Commissions accepted. Demonstrations and workshops offered to groups. www.carolinesart.co.uk.

0115 9443411

carolinemcfarlaneart@aol.com

<http://www.carolinesart.co.uk>



William Vaudin

Eclectic inspirations from Wind in the Willows to H.P. Lovecraft and original ideas result in distinctive and brightly coloured images which lend themselves to merchandise.

07801 429263

william@vaudin.net



41

CTD

Dodeka Designers

Barbara Coulam - Recycled glass, unique decorative and useful items made from windows and bottles Ann Christina Robson - Handwoven fabrics designed for quality practical items Eilean Wilding - Machine and hand stitched decorative textiles, paintings, prints.

Cotton Mill Hill, URC Hall, Holymoorside, Chesterfield S427EJ

mail@dodekadesigners.co.uk

<http://www.dodekadesigners.co.uk>

Take A619 Chatsworth Road out of Chesterfield. Take left turn signed Holymoorside. Drive as far as village hall, turn left at the pub on the corner. The venue is a little way up Cotton Mill Hill on left.



42

CTd

Ecostitchers

Beeley village is located off the B6012. Take left turn opposite the Devonshire Arms onto Chapel Hill then take first right onto School Lane. The village hall is immediately on the left.

We are a group of textile artists based in and around the Peak District and Sheffield. In trying to work in an environmentally conscious and sustainable way, we are adopting the principles outlined by the movement for action against climate change. In our work: We resist where possible buying new fabrics to work with We repurpose, reuse and recycle our materials - old clothes, old bedlinen, old curtains, fabric offcuts, fabric scraps, old yarns and threads, paper, card etc. We rehome materials and fabrics unwanted by other people.

Cavendish Village Hall, School Road, Beeley, Matlock DE4 2NU

07798 843072

judeshore@icloud.com

<http://www.ecostitchers.com>



43

CTD

Caudwell's Mill

We are a historic working flour mill with 5 resident artists in our old mill buildings - including a painter, a glass artist, a mosaic artist, and a silversmith. We also have a florist and blacksmith on site, and a gift shop and vegetarian café.

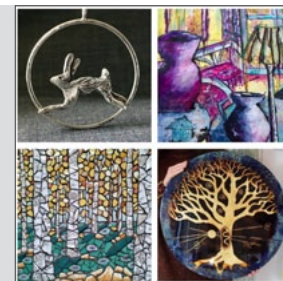
Caudwell's Mill Rowsley, Matlock, Derbyshire, DE4 2EB

01629 734374

caudwellsmilevents@gmail.com

<http://www.caudwellsmill.co.uk>

Located on the A6, between Bakewell and Matlock. The main car park is situated behind the Mill down School Lane, which is opposite the Peacock Hotel. Disabled parking available in the Mill Yard which you can access from the A6. Monday to Saturday - 09:00 - 17:00 Sunday - 10:00 - 16:00.



44

a

TPd

The Willows, Station Road, Darley Dale DE4 2EQ

Coming into Darley Dale on the A6 turn down the B 5057 towards Winstar with The Whitworth Centre and Park on the right. We are the third house down on the left after the shops. Parking/Refreshments

Jennie Merriman

A Point of View. A response to finding ourselves living in isolation and the perspective we have. Making this work has surprised and delighted me - how special and beautiful everything is when isolated. It gives a chance to explore and see in greater depth.

07968 791723

jennie@thestrarwolds.plus.com

<http://www.jenniemerriman.co.uk>



The Willows, Station Road, Darley Dale DE4 2EQ

Coming into Darley Dale on the A6 turn down the B 5057 towards Winstar with The Whitworth Centre and Park on the right. We are the third house down on the left after the shops. Parking/Refreshments

Mo Walton

Simple and stylish handcrafted sterling silver jewellery that is wearable for many occasions. Also, a selection of semi-abstract landscape paintings inspired by Derbyshire's unique atmosphere.

07789 116610
morw@idnet.com



Anne Menary

Working by hand I create Textile Art collages, wall pieces, fabric postcards, altered books and cards which reflect my interest in travel, the seasons and the solar system. Some pieces are displayed in customised boxes.

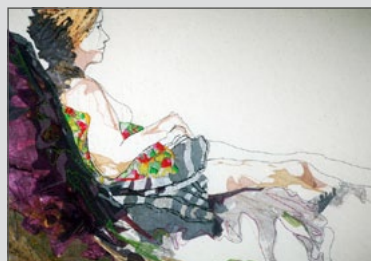
07752 855034
anne@annemenary.com
<http://www.annemenary.com>



Jo Owen

My Fine Art textile pieces are based on my preoccupation with life drawing, I find the fascinating textural qualities produced by manipulating, layering, painting and stitching fabric and paper can be endlessly explored. I draw with thread achieving a 3D effect.

07876 288172
joowen10@hotmail.com
<http://www.joowen.weebly.com>



Kath Hollis

Pottery and artwork based on the natural world.

07717 672901
kathhollis042@gmail.com



The Willows, Station Road, Darley Dale DE4 2EQ

Coming into Darley Dale on the A6 turn down the B 5057 towards Winstar with The Whitworth Centre and Park on the right. We are the third house down on the left after the shops. Parking/Refreshments

Fenella Noble

I make figurative sculptures from chicken wire, mostly full size, designed to live in the garden (though I know a couple of people who keep their wire piglets indoors). The wire mellows to a soft grey which sits gently in the landscape.

07837 547287
Fenella@fenellanobledesign.co.uk



Peggy Fearn

Whilst still using abstract construction to create geometrically folded sculpture and 3D work with fabric, I decided to have a complete change and work with crochet techniques. Following the thread to make small, organic sculptures in the form of vessels has been very therapeutic.

01142 368407
peggyfearne@hotmail.com



Olinda Everett

Hand built ceramic sculptural and utilitarian forms made from stoneware clay, using multiple surface decoration techniques. Current work is strongly tied to memory and cultural heritage, human interaction within society.

07971 240565
olindaeverett@gmail.com
<http://www.olindaeverettceramics.weebly.com>



Pete Singer

I make pots for people to use and enjoy using. A bowl, a plate, a dish or a vase, slowly produced for my enjoyment and, I hope, your pleasure.

07742 589531
singer.pete@gmail.com



The Derbyshire Makers

The Whitworth Centre, Dale Road North, Darley Dale, Matlock DE4 2EQ. Group a - The Brunel Room. Group b The Ballroom. Artists c & d - The Gallery.

a

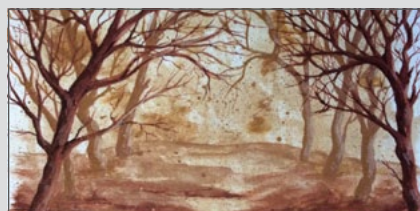
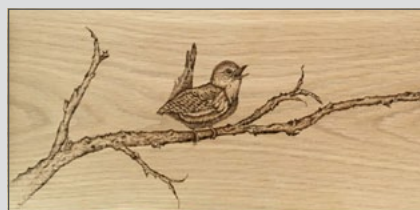
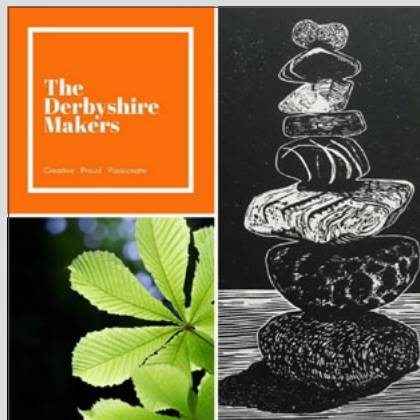
CTD

The Whitworth Centre is on the A6 in Darley Dale near the B5057 junction and traffic lights. Adjacent to Barrington's pub, there is a large car park north of the centre. Toilet and café on site.

Amanda McConnell is a fine art photographic artist creating colourful and uplifting prints and art cards, inspired by nature's intricate details. Chhaya Pandit is a self-taught, nature inspired artist. Each painting begins with a colour obsession, a dream, or a thought. Danielle Dignam creates contemporary fluid art and gifts made from recycled paint. Julie Leggett is a mixed media artist inspired by nature and interiors, incorporating paint, collage, stitch and textile. Alison Evans is a paper and textile artist, creating paper cut art and fabric plant sculptures. Steph Jansen is a wet felter, creating painterly landscapes using vibrant colours and rich textures. Sharon O'Connell is a textile artist using felting techniques to create landscape pictures and organic bowls. Andrea Hytch paints abstract landscapes and still-life compositions using layers of oil and cold wax. Christine Jones is a lino collagraph printmaker, hand printing all of her work from her home studio. Diana Green is an eco landscape artist, using natural paints that she makes herself. Jenny Beech is an artist and pyrographer creating hand-burnt artwork to convey wonder, resonance and connection.

The Brunel Room
07877 927801
info@thederbyshiremakers.co.uk
http://www.thederbyshiremakers.co.uk

We are in the Brunel Room.



Peak District Artisans Whitworth

The Whitworth Centre, Dale Road, North Darley Dale, Matlock DE4 2EQ.

b

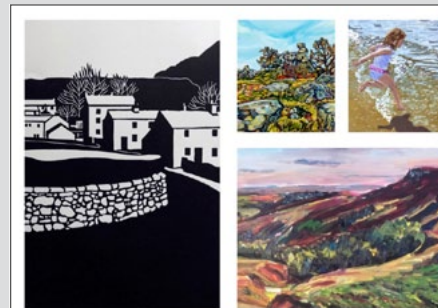
CTD

The Whitworth Centre is on the A6 in Darley Dale near the B5057 junction and traffic lights. Adjacent to Barrington's pub, there is a large car park north of the centre. Toilet and café on site. Saturday 10am to 5pm Sunday 10am to 4pm.

View original artwork by eight members of the highly regarded Peak District Artisans, an association of some of the best professional artists and makers based around the Peak District. Paintings by Steve Elliott, Craig Longmuir, Jenny Mather, Bethan Nadin and Jo Polmear, using oils, acrylics, pastels and watercolours, exploring interpretations of landscape and still life, ranging from realism to abstraction. Fine Art Photography by Ian Daisley, with a personal view of landscape. Printmaking by Lottie Adams and Liz Wellby, exploring light and shade, natural forms, still life and landscape.

The Ballroom
07484 899650
jopolmear@icloud.com
http://www.peakdistrictartisans.co.uk

We are in the Ballroom.



c

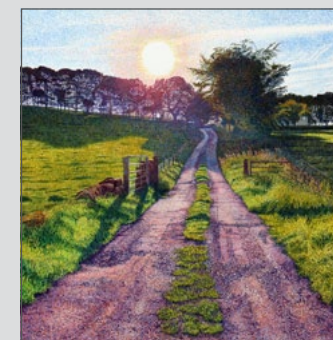
CD

Mark Langley

This year Mark is showcasing an exciting change in direction towards landscapes in oils and a fresh pointillist style. An amazing contrast for the full time Derbyshire artist who is best known for his intricate highly detailed pencil drawings of animals and architecture.

The Gallery
07849 657898
mark@mark-langley.com
http://www.mark-langley.com

We are in the Gallery.



d

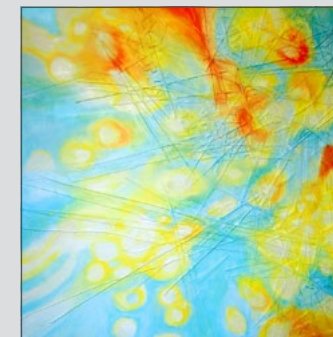
CTD

Louise Jannetta

Diverse and uncompromising Jannetta's work explores the vocabulary and the framing of painting. Subject and medium are combined with an extensive repertoire of skills to allow the alchemy of matter to express itself. The art becomes the conduit through which earth takes centre stage.

The Gallery
07931 821191
enquiries@louisejannetta.co.uk
http://www.louisejannetta.co.uk

We are in the Gallery.



48

a

CTP d

Ivy Cottage, Upper Lumsdale, Matlock DE4 5LB

Leaving Matlock on A632 Chesterfield Rd, pass the Duke of Wellington pub on left, continue on and take the first turning on the right into Upper Lumsdale. Park in the layby opposite Highfields School. Ivy Cottage is on the left.

Sarah Burgess

The environment informs my work, fragile landscapes and climate extremes stimulate ideas. Complex printed surfaces are layered with transparency and marked with stitch; working with monotype on paper and fabric the drawn mark develops its own voice as I respond to incident and uncertainty.

01629 55317
sarahburgess6@gmail.com
<http://www.sarah-burgess.com>

Preview 6 - 8. Refreshments Saturday and Sunday. Other times by appointment.



b

TP d

Susan Mulroy

Softly thrown woodfired pottery and raku jewellery from the Peak District. Beautiful and useful, the domestic stoneware is uncomplicated and brought to life by the flame in the kiln whilst the bright colours of raku adorn the nature inspired pendants.

07779 263495
suemulroy@hotmail.com

Preview 6 - 8. Refreshments Saturday and Sunday.



c

CTP d

Helen Perkins

My work captures life today, using oils on canvas. I love to study people and to paint them just as they are. I also like the quietness of still life work, studied in natural light.

07806 773150
info@helenperkins.co.uk
<http://www.helenperkins.co.uk>

Preview 6 - 8. Refreshments Saturday and Sunday.



49

Cd

Ann Bates

Individually handmade vessels and tiles, made from stoneware and porcelain clays. The vessels are built in layers interspersed with coloured clays to suggest landscape, whilst the tiles are textured and patterned with natural materials or symbols.

Lumsdale Road, Oak Cottage, Matlock, Derby DE4 5LB
01629 55429
ann@annbates.co.uk
<http://www.annbates.co.uk>

From Matlock town centre A615 Matlock Green, left at crossroads A632, Chesterfield Road. After 1 mile turn right Lumsdale Road, pass Slacks garage, Highfields school and follow road to junction with Asker Lane. Take left fork, follow event arrow.



50

Cd

Beth Sharliss

Individual and wearable pieces of art inspired jewellery using freshwater pearls, semi precious stones and re cycled materials. Modern and vintage inspired collections. Bespoke pieces can be commissioned to suit an outfit or occasion. Silver work will be a new addition for 2022.

287 Chesterfield Road, Forest Lodge, Matlock DE4 5LE
07799 603154
sharon.shoeshinesharon.pepper@gmail.com
<http://bethsharlissjewellery.com>

Last house, left hand side leaving Matlock on Chesterfield Road, before new housing estate and golf club.



51

a

CTP D

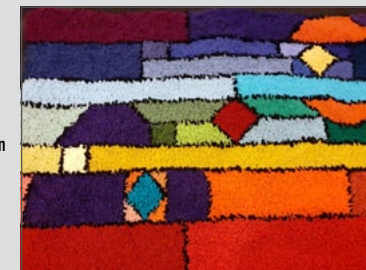
Tansley Village Hall, Church Street, Tansley, Matlock DE4 5FH

Through Matlock toward Alfreton, A615. 1.5ml out take left turn, Church Street. Alfreton direction, A615, in Tansley turn right into Church Street after The Tavern PH. Venue on Right, car park to front. Do not use post code for SatNav.

Oksana Holbrook

Hooked rag rugs and wall hangings using recycled and scrap fabric. My work has a heavy emphasis on colour and pattern drawn from my Ukrainian heritage.

07990 973819
oksanaholbrook23@gmail.com



b

D

Heather Arbon

Designer maker producing functional and decorative art pieces. Machine embroidered dragonfly and butterfly brooches worked into soluble fabric. Collaged pictures which include paint, fabrics, dried leaves and machine embroidery. Botanical (eco) printed range of sketchbooks. Plus my fabric covered journals, hand stitched in bespoke fabrics.

07758 586969
arbonepike@aol.com
<http://HeatherArbonTextileArt.com>



c

D

Vanna Taylor

I love to work with clay. I like experimenting with different clays and glazes to achieve a variety of finishes. I do favour the traditional studio pottery finish. This stems back many years. Collecting so many types of ceramics as a youngster.

07939 363066
v-a-n@w3z.co.uk
<https://vannas-studio-pottery.weebly.com>



51

d

CTD

Tansley Village Hall, Church Street, Tansley, Matlock DE4 5FH

Through Matlock toward Alferton, A615. 1.5ml out take left turn, Church Street. Alferton direction, A615, in Tansley turn right into Church Street after The Tavern PH. Venue on Right, car park to front. Do not use post code for SatNav.

Hazel Money

Hazel's paintings depict Derbyshire's varied landscape, with many completed on-location using acrylics or oils. She captures quiet unassuming landscapes that explore the subtle moods of the seasons, exploring forgotten corners and unusual views away from the beaten path. She is available for workshops and demonstrations.

07984 887133

hazel@fieldbreaksart.co.uk

<http://www.hazelmoney.co.uk>



e

D

Vikki Singleton

A clay animal sculptor since 2016, using techniques such as pinching, coiling and slabbing, to create realistic depictions of the world's favourite animals.

07973 619944

vikki.singleton@outlook.com

<https://www.etsy.com/uk/shop/Vikkisingleton>



f

CD

Solitary Bee Ceramics

A collection of wheel thrown and slab built functional and decorative ceramics. My designs incorporate stamped and textured decoration and finished pieces are sometimes enhanced by the use of upcycled wood and metal.

07757 078424

ijc101965@gmail.com



g

CTD

Guy Badham

Photographs that illustrate and celebrate the varied Landscape and Wildlife of Derbyshire and the Peak District. Photos are sold mounted and/or framed in a variety of sizes. Greetings cards and canvases also available. Photography training days are also offered year-round.

07980 587521

guy.badham@gmail.com

<http://www.guybadhamphotography.com>



51

h

D

Tansley Village Hall, Church Street, Tansley, Matlock DE4 5FH

Through Matlock toward Alferton, A615. 1.5ml out take left turn, Church Street. Alferton direction, A615, in Tansley turn right into Church Street after The Tavern PH. Venue on Right, car park to front. Do not use post code for SatNav.

Jenny Thomas

My handcrafted unique functional and ornamental pieces are individually formed allowing the nature of the clay to dictate the form. I both throw and hand build my work allowing the elements of the Yorkshire coast to inspire the texture and colour palette of my work.

07814 298413

jennyjceramics@gmail.com



i

CTD

Aquaramics

All my work is bespoke hand made pottery. Drawing my inspiration from all things aquatic. Be that life or nautical. My animals have an element of realism with a unique quirky personality. I also like to dip a toe in the mythical now and again.

07875 535896

aquaramics@hotmail.co.uk

<http://www.aquaramics.co.uk>



i

CD

Sarah Vanic

I produce wheel thrown pottery for daily use which is kiln fired to stoneware temperatures. I strive for a country cottage feel and my choice of clay produces tiny, little iron speckles showing through a creamy white glaze.

07837 187930

sarah@chupinkapottery.co.uk

<http://www.chupinkapottery.co.uk>



52

CTP d

Martin Sloman

Rich use of colour, not always associated with watercolours. I also paint a wide range of subject matter, just about anything that catches my eye. Could be Cromford canal, a portrait of Keith Richards, snow capped mountains, or the grace of a ballerina.

The Market Place, Cromford Studio and Gallery, Cromford, Derbyshire DE4 3QE

447790 926976

cromfordstudioandgalleryinfo@gmail.com

<http://www.cromfordstudioandgallery.weebly.com>

If approaching from the A6, at the crossroads with traffic lights take the B5036 signposted Wirksworth. After only a few yards turn left into the car park in front of the Community centre, park here or in front of gallery. Gallery open Weds-Sunday 10-5pm.



53

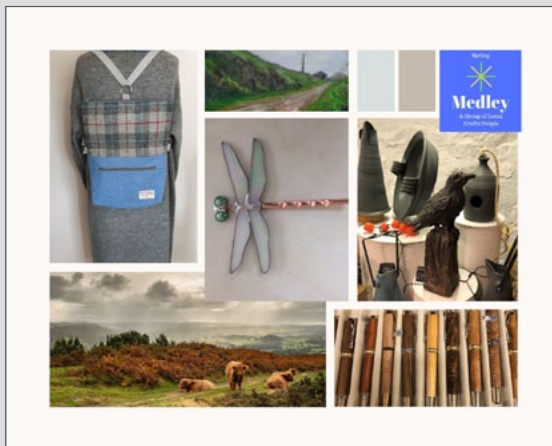
Medley

CTD

From Cromford use B5036 turn right Porter Lane, turn left at sign for NSC. From Wirksworth Use B5036 left onto Porter Lane, turn left at sign for NSC. From Ashbourne B5035 and turn right at sign for NSC. Saturday 10-4pm Sunday 10-4pm.

Medley is a well-known group of artists and makers who work within the local area creating high quality pieces of art and artisanal craft. Individually they are award winning and display their work regularly at local venues and galleries. The group includes Ruth Gray Images fine art, Chantal Kelly-stained glass, Scribbings handcrafted pens, John Hermansen studio pottery, Forget Me Not Crafts textiles, and Naomi Jones wildlife and landscape photography. Cafe, toilets and car parking available.

National Stone Centre, Porter Lane,
Wirksworth, Derbyshire DE4 4LS
01773 741821
ruthgrayimages@hotmail.com
<https://medleyartgroup.weebly.com/>



54

Stevie Davies

CTd

Contemporary glass art, jewellery and accessories, handmade with a focus on colour and sparkle. Using kiln fusing processes, multiple firings to build layers of unique texture and details. I strive to push the material, creating aesthetically pleasing and often functional pieces for you to enjoy.

27 Market Place, Create Space Studio & Gallery, Wirksworth DE4 4ET
07884 402036
info@stevie-davies.co.uk
<http://www.stevie-davies.co.uk>

Find my studio and gallery on the main road, opposite the Hope & Anchor pub. Closest pay & display is the Market Place car park (DE4 4EG) just over the zebra crossing from my door. Access up two stone steps. Additional Opening - Thurs 26th 11-4pm Friday 27th 11-4pm.



55

Sue Crossfield

Cd

All my work is designed and hand made in my Ashbourne studio. My colourful marine themed pieces are inspired by sea life both below and above the surface, often with a whimsical twist. Over the years my unique seahorse forms have become my signature theme.

5 Peak View Drive, Ashbourne DE6 1BR
01335 300681
sue@suecrossfield.co.uk
<https://www.suecrossfield.co.uk/>

From Derby Road in Ashbourne, turn into Old Derby Road. At the roundabout take the third exit, and Peak View Drive is immediately on the right. Number five is on the left, just off the green. In addition to the two days, visitors can phone to make an appointment for the following week.



56

Peak District Artisans Beechenhill

CTd

From Ilam, your sat nav will take you up the hill towards Beechenhill but will stop directing about 1/2 mile before the farm. Look out for the big red banners from either direction. Please park prettily !!

Peak District Artisans have formed a group of 9 artists and makers at Beechenhill Farm, Ilam. PDA has a history of 30 years in working hard to promote the wonderful, creative people living and working in the Peak District. Members are selected for their unique outlook and excellence in their practice. At Beechenhill Sue Prince - Louise Edwards - Thomas Petit - Rachel Evans - Karin Sheldon - Giles Davies - Tim Rose - Cheryl Wilbraham - Judy Gilley. The Arty Cafe raising funds for the local First Responders.

Beechenhill Farm, Ilam, Ashbourne DE6 2BD
07817 880088
karin.sheldonoriginals@gmail.com
<http://www.peakdistrictartisans.co.uk>



57

Colin Halliday

CTPd

Oil paintings mostly plein air, Derbyshire and Lake District and still life. Having just moved last year we are happy to unveil a big new dedicated Gallery space as well as a separate studio space. Plus storage racks with 1000's of paintings available.

Birchwoodmoor House, Roston, Ashbourne DE6 2EH
07759 595294
challiday1964@btinternet.com
<http://colinhallidayart.co.uk>

Easiest way to find is What3words painters.botanists.posting Take B5033 off the A515, take next left onto Roston Common, go past Squashley Bank and past a mast about 400m on your right is sign for Birchwoodmoor go down the lane. Additional Opening - We will also be open from 5pm until 10pm on Friday 27th May



58

Sudbury Courtyard, Main Street, Sudbury, Derbyshire DE65EB

Sudbury Courtyard is located in South Derbyshire just off the A50 at the junction with the A515 Ashbourne to Lichfield Road. The Courtyard is next to the National Trust Sudbury Hall and opposite the Vernon Arms.

a

Karen Williams

Unique handmade sculptures made from recycled fabric, suitable for both home & garden being weatherproof all year round. Also wire wrapped faeries.

07870 398996
karen@faerie-tales.co.uk
<http://www.karen-williams.co.uk>



58

Sudbury Courtyard, Main Street, Sudbury, Derbyshire DE65EB

Sudbury Courtyard is located in South Derbyshire just off the A50 at the junction with the A515 Ashbourne to Lichfield Road. The Courtyard is next to the National Trust Sudbury Hall and opposite the Vernon Arms.

b

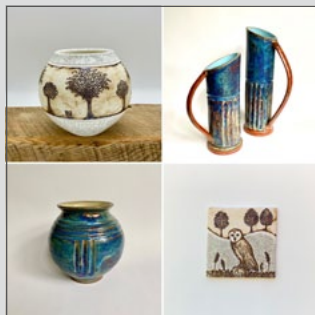
CTD

Hothouse Ceramics

From their studio at Sudbury Lesley creates hand built porcelain wall art, vessels and jewellery inspired by the beauty of the British countryside and Terry has a range of functional thrown stoneware with colourful layered glazes influenced by the colours of the Derbyshire Peak District.

07977 934624

lesley.nason@bopenworld.com

<http://www.instagram.com/hothouseceramics>

c

CTD

Leigh Wood

Metal Manipulation makes handmade industrial style lighting, furniture, garden sculptures/ornaments and gifts with a unique style and design. All our pieces are handmade on the Derbyshire, Leicestershire border in our workshop on the Staunton Harold Estate, part of the Ferrers Centre for Arts & Crafts.

07921 146699

Sales@metalmanipulation.com

<http://www.metalmanipulation.co.uk>

e

TD

David William Sampson

The travelling orphanage will be fostering a range of children ready for adoption, each have their own characteristics, charms and story to tell. Come one, come all and meet the curiosities of David William Sampson's at the marvellous creations on show.

07941 749424

art@davidwilliamsampson.com

<http://www.davidwilliamsampson.com>

10am-4pm Saturday and Sunday



Log into our interactive website this year it has lots of features

Find your favourite artists and plan your own trail using your mobile phone or tablet

Filter for venues with Preview Evenings or Disabled Access

Find artists you can commission work from

Discover the artists who teach and offer workshops

View artists slide shows, videos and the latest instagram posts

58

Sudbury Courtyard, Main Street, Sudbury, Derbyshire DE65EB

Sudbury Courtyard is located in South Derbyshire just off the A50 at the junction with the A515 Ashbourne to Lichfield Road. The Courtyard is next to the National Trust Sudbury Hall and opposite the Vernon Arms.

f

CD

Cathy Wilson

Fused and stained glass pieces for the home, designed by me, CatherineV, in my studio in Derby.

07501 272920

cathy_wilson@ntlworld.com

https://www.instagram.com/catherine_v_glass/

g

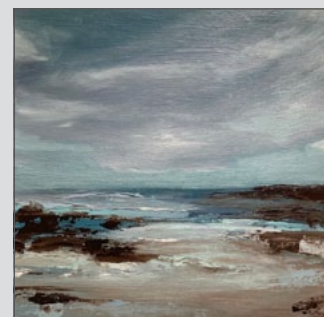
CD

Helen Brown

In my semi-abstract landscape and seascape paintings, I try to catch the light, colour and movement, beauty and raw energy of the natural environment. I hope that others will feel, or recognise something of this in my work.

07388 048138

helen.brown365@gmail.com

<https://www.helenbrown ceramics.co.uk>

h

CTD

Gael Cherry

Botanical themed ceramics

01889 591311 / 07891 797468

gael.cherry123@gmail.com



i

CTD

Helen Domleo

Contemporary eco sterling silver jewellery inspired by leaves, seedpods and organic forms. The jewellery is crafted out of textured silver, which is then sawn and shaped either into delicately patterned leaves or fold formed into seedpod shapes. Hand crafted findings are incorporated into the pieces.

07950 098947

hdomleo@yahoo.com

<https://www.helendomleo.co.uk>

Sudbury Courtyard, Main Street, Sudbury, Derbyshire DE65EB

Sudbury Courtyard is located in South Derbyshire just off the A50 at the junction with the A515 Ashbourne to Lichfield Road. The Courtyard is next to the National Trust Sudbury Hall and opposite the Vernon Arms.

Ben Sherwin

A collection of landscapes from Derbyshire as well as other parts of the UK such as Wales. Inspired by walks in British countryside, I am pleased we have such varying scenery on our Island as many have said before. It never gets old.

07803 273633

bsherwinart@gmail.com

<http://www.bensherwinart.com>



Pete Rix

Traditional rocking horse maker and restorer. Pete has been carving since the age of 14. Over the years Pete has developed his skills of sculpture and traditional wood carving and in doing so has developed a true passion for these wonderful and timeless toys.

07977 129596

pete.rix@rixand.co

<http://www.rockinghorsemakers.com>



Sally Deegan

Paintings in inks and mixed media inspired by the seashore, allotments and the natural world. Repurposing driftwood and allotment objects to frame and display work.

sally_deegan@yahoo.co.uk

<https://www.folksy.com/shops/InkyPebble>



Sara Boyle

I create oil paintings and mixed media pieces that delve into mother and child relationships, my work is mainly figurative with added exploration of "what it is to be female".

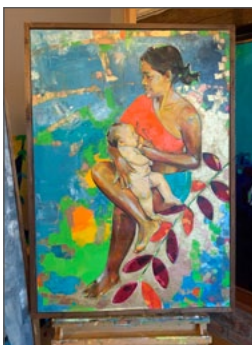
12 Bank View Road, Darley Abbey, Derby DE22 1EJ

07500 908974

sara@saraboyle.com

<http://saraboyle.com>

Turn off the A36 Queensway onto the A6 Duffield Road, head towards Derby town centre and turn onto Darley Park Drive at the Broadway Pub mini roundabout. Bank View Road is on your right. Additional Opening - My studio will be open to the public from the 23/05 to 27/05 also, 10am to 4pm.



Banks Mill Studios

Banks Mill Studios, 71 Bridge Street, Studio 1.2, Derby DE1 3LB

Visit Banks Mill Studios to meet a diverse range of artists and makers in their working studios, buy original artwork and handmade items, and view an exhibition of artwork around the building. See the Banks Mill website for parking details. Abbie Sunter, hand-built contemporary stoneware sculpture - www.abbiesunter.co.uk China Petals, fine china and glass mosaics and make at home kits - www.chinapetals.co.uk Christine Thomas, mixed media textile artist and educator on community projects - www.christinethomas.co.uk Felicity Jackson, natural world watercolour artist featuring wildlife and landscapes - www.felicityjacksonart.co.uk Green Door Printmaking Studio, environmentally sound open access studio and courses - www.greendoor-printmaking.co.uk Michael Hill, abstract mixed media artist featuring shape and colour - www.michaelhillart.co.uk Mr Ps Pots, handmade, functional, unique pieces in stoneware - www.mrpspots.co.uk Peak Gate Textiles, handwoven wall art - www.peakgatetextiles.co.uk Sarah Perkins Art, animal art and pet portraiture - www.sarahperkinsart.co.uk Sazzi Creations, handmade textile products - www.sazzicreations.co.uk

01332 597866

banksmill@derby.ac.uk

<http://www.banksmill.co.uk/darts2022>



China Petals

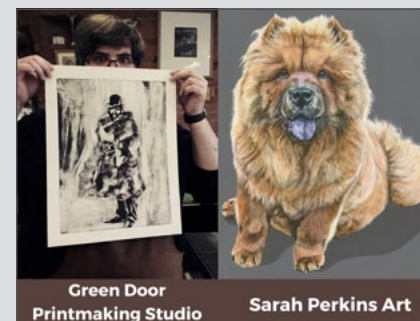
Sazzi Creations



Michael Hill

Mr Ps Pots

Peak Gate Textiles



Green Door Printmaking Studio

Sarah Perkins Art



Christine Thomas

Abbie Sunter

Felicity Jackson

Zaza Lewis

I layer hand-cut card with vibrant fabrics. A scalpel, scissors, patience and an array of textiles are mostly all I need, as I like the extra challenge of NOT using paint. Subjects include landscapes, towns, street scenes architecture, flowers, fruits and plants.

Studio 1.2

07779 160793

zazalewis44@gmail.com

<http://www.artizaza.com>



61

Cd

Caroline Lowe

Caroline's expressive abstract paintings are a visceral interpretation of how she encounters the world and her desire to explore paint. Her works use shifting spaces that bounce between freedom and control. She is intrigued by how we perceive, and emotional visual sensations.

7 Murray Road, Mickleover, Derby DE3 9LE
07816 486833
carolinelowe1@gmail.com
<http://carolinelowe.co.uk>

From A38 Markeaton roundabout, exit onto Ashbourne Rd/A52. At the traffic lights turn left onto Radbourne Lane, at the second roundabout, first exit onto Station Rd, B5020. Turn left onto Onslow Road, left onto Brisbane Rd, left onto Murray Park Rd.



62

CTPd

Tom Voyce

Tom Voyce is a British painter whose subject matter comprises themes such as interiors and semi abstracted landscapes, often within the notion of place and transit. The artworks consistently demonstrate an interest in the formal elements of composition: structure, perspective, shape, and light.

New Court Gallery, Repton DE65 6FL
07885 645838
tomrlvoyce@gmail.com
<https://tom-voyce.com/>

The gallery has free car parking opposite which is accessed on Burton Road as you enter/leave Repton village. From Derby/ Nottingham, access from the A50 & A38 will bring you through Willington to Repton.



63

a

CPD

GALLERY / Creative Melbourne Gallery, Wellington House, Church Street, Melbourne DE73 8EJ
We are located just off Melbourne Market Place in the heart of the village within easy walking distance of Melbourne Pool.

Amanda Hughes

I create bright and joyful wall art from my self-build art studio in Melbourne. My love of dance/ movement and nature is evident in my work. Patterns, swirls, falling leaves, clothes or waves create a sense of movement and dance. You create the storyline.

07824 515845
amanda@amandahughesart.co.uk
<http://www.amandahughesart.co.uk>



b

CTPD

Sue Gardner

I create large scale animal themed oil paintings. My work is highly coloured and impressionistic, often using decorative elements which add to the fun and interest in each unique piece.

01283 223239
hello@suegardnerstudio.com
<http://www.suegardnerstudio.com>



63

c

CTPD

GALLERY / Creative Melbourne Gallery, Wellington House, Church Street, Melbourne DE73 8EJ

We are located just off Melbourne Market Place in the heart of the village within easy walking distance of Melbourne Pool.

Teresa Barlow

My work includes painting, printmaking and ceramics, often combined, to capture something of the energy and excitement of people at play. I like to include unexpected details, humour and a sense of anticipation within my work.

07770 410342
teresambarlow@icloud.com

There will be a preview evening on Friday 27th May from 5-8pm



d

CPD

Susan Olumide

Sculptural ceramics inspired by natural textures.

07395 026242
susan.olumide@gmail.com
<http://www.susanolumide.uk>



e

PD

Sujata Aten

Hand made pottery, tableware and decorative objects.

07963 099785
sujata.aten@yahoo.com



f

PD

Kate Westwood

I paint contemporary, atmospheric abstracts and landscapes, mostly using acrylics and pastels. I love the juxtaposition of blended, elegant textures alongside solid, harsh lines. I always try to incorporate an element of light and dark extremes to create a dramatic aesthetic.

07738 614081
kate_westwood1@hotmail.com
<http://www.katewestwood.com>



63

g

CTPD

GALLERY / Creative Melbourne Gallery, Wellington House, Church Street, Melbourne DE73 8EJ

We are located just off Melbourne Market Place in the heart of the village within easy walking distance of Melbourne Pool.

Jane Bevan

I forage for natural materials in the local countryside collecting bark, twigs, leaves and feathers. These are then stitched, tied and assembled together to create small sculpture, vessels and collage which celebrate and engage with nature.

07941 626452

janebevan@btconnect.com

<http://www.janebevan.co.uk>

64

CD

Michael Cook

My work is an imaginative distillation of memories and sensations of the fields, wildlife, lanes, orchards and hedgerows of the place where I grew up, and has obvious links to British Neo-Romanticism, with aspects of the natural world conveying emotions of joy, serenity and sorrow.

6 Kings Newton Fields, Kings Newton Lane, Melbourne, Derbyshire DE73 8DD

01332 862365

michaelrcook@btinternet.com

<http://www.hallowed-art.co.uk>

Satnav directs you to Tori & Ben's Farm shop, our driveway is 200m from their drive, on the same side. Look for a blue sign saying Kings Newton Fields, follow the long driveway down, Gallery is in courtyard behind bungalow. The Manger Gallery is open throughout the year with changing selections of my own work and special exhibitions with other artists' work. The Gallery is open at your request, please phone or email ahead of your visit. Go to www.hallowed-art.co.uk for details.

Liability - Notice to All

Derbyshire Open Arts, the artists and craftspeople or the venues cannot be held liable, jointly or individually, for any loss or injury sustained at any of the venues or consequentially, and all appropriate precautions for security and safety must be taken by individuals at the event or on subsequent occasions when attending for tuition or other purposes. Be aware that venues may be equipped with chemicals, tools, machinery or other materials or processes all or any of which may be hazardous.

Derbyshire Open Arts does not inspect the venues, therefore each individual person working at or visiting any of the venues takes responsibility for any attendant risk to which he or she may be subject.



DERBYSHIRE
OPEN ARTS 2022



Meet the team 2022

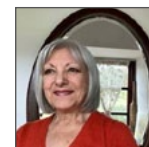
We are a voluntary organisation run by a small team. We work hard to create an enjoyable event for both artists and visitors. If you have an interest in the arts and would like to get involved on the committee, please contact us.



Pete Singer

Chair, Distribution and Website

Pete is a potter based in Darley Dale. Working mainly in stoneware, making functional pots for use in the house and garden. He is a member of Northern Potters, and the ceramics community based at the Eco Centre in Wirksworth.



Olinda Everett

General Secretary and MailChimp Secretary

Olinda is a potter who works in Ashover, making boxes and sculpture. She draws on Middle Eastern and Southern European ceramic styles. Olinda is a member of the Northern Potters Association and Holymoorside Arts Festival.



Nigel Winter

Treasurer and Website

Not an artist but enjoys involvement with like-minded people and the opportunity to support this worthwhile event.



Jennie Merriman

Brochure and Website Coordinator

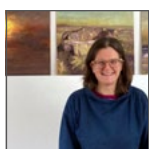
Jennie comes from an embroidery background and now works as a mixed media textile artist. She is a member of textile and printmaking groups in Derbyshire and Sheffield, exhibiting and working with them. Her creative work focuses on stitch, print and constructed 3D pieces.





Adrian Holt
Northern Rep. and Committee

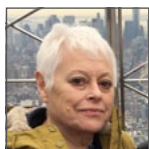
Adrian is a ceramics artist based in Glossop. He joined the team in 2011 having exhibited as an artist for the last six Open Arts events. Adrian aims to promote the arts in the north of the county and recognises the important role that the Derbyshire Open Arts plays in this.



Emma Hoten
Social Media

Emma is a contemporary landscape artist based near Chapel en le Frith and over the few years has started to seriously develop her art, using social media as her main marketing channel. Looking for local events to showcase her work in 2021, she quickly recognised the huge benefits that Derbyshire

Open Arts brings to both visitors, locals and artists, and was delighted to join the team to raise awareness of the wonderful breadth of creative talent across the county.



Cass Rawlings
Website

Cass is a textile artist mostly using hand stitch with layered fabrics. Tapestry weaving and traditional upholstery are also interests and she exhibits with two Sheffield based groups. As Cass has now moved to Derbyshire she is providing a venue for Derbyshire Open Arts.



Oksana Holbrook
Distribution

Oksana is a textile artist based in Nottingham. Although mainly a machine knitter, she is passionate about sustainability and recycling. She currently designs and produces hooked rag rugs and wall hangings from recycled and scrap fabric. Her work has a heavy emphasis on colour and pattern with inspiration being drawn from her fascination with stained glass and geometry



A - Z Directory of Artists

Adams Lottie	45b	Lino Print	Darley Dale
Allen Joanna	12	Textiles, Printmaking, Mixed Media	New Mills
Annis Marion	33a	Mixed media, textiles & Printing	Dronfield
Appleton Jody	7	Wood & acrylic	Hayfield
Arbon Heather	51b	Mixed media	Tansley
Aten Sujata	63e	Pottery Craft	Melbourne
Badham Guy	51g	Photography, Landscape, Wildlife, Derbyshire	Tansley
Baker Terry	30	Digital Art & Photography	Buxton
Barlow Teresa	63c	Mixed Media	Melbourne
Barnes Janet	40h	Ceramics	Holymoorside
Basnet Jo	9d	Ceramics	New Mills
Bates Ann	49	Ceramics	Matlock
Beckett Carol	7	Various media	Hayfield
Beech Jenny	45	Artist & Pyrographer	Darley Dale
Benson Fiona	53	Scribbles hand crafted pens	Wirksworth
Bevan Jane	63g	Craft with natural materials	Melbourne
Booton Steve	33b	Ceramics	Dronfield
Boyle Sara	59	Figurative & Portrait Artist	Darley Abbey
Braithwaite Natasha	27	Photography	Buxton
Bridges Eve Luma	6	Photography, Illustration, Mixed Media	Hayfield
Bridges Simon	6	Photography, Illustration, Mixed Media	Hayfield
Brighton Mark	23	Paintings & Drawings	Buxton
Brooks Andrew	11d	Photography	New Mills
Brown Helen	58g	Painting	Sudbury
Brownsword Julia	21	Mixed Media Design 2D/3D	Chapel-en-le-frith
Burgess Sarah	48a	print/stitched textiles	Matlock
Burton Paul	51i	Hand Crafted Ceramics	Tansley
Cherry Gael	58h	Handmade decorative ceramics	Sudbury
Cheung Lin	25	Abstract Art	Buxton
Clitheroe Rebecca	24	Mixed Media	Buxton
Conchie Sheila	13	Embroidered brooches & caskets	New Mills
Connolly John	38	Contemporary paintings	Bolsover
Cook Michael	64	Painting & Drawings	Melbourne
Copestake Val	13	Patchwork & Quilting	New Mills
Coulam Barbara	41	Recycled glass	Holymoorside
Coverley Tracey	18	Fine Art in Textiles	Whaley Bridge
Coyle Ian	51f	Ceramics, Mixed Media	Tansley
Crossfield Sue	55	Ceramics	Ashbourne
Culkin Gwenda	39	Textiles/mixed media	Doe Lea, Chesterfield
Cunliffe Helen	1	Stoneware & Porcelain	Glossop
Cunliffe Phil	1	Ceramics	Glossop
Cunningham Tamsin	19	Textiles, mixed media, drawings, ceramics	Whaley Bridge
Daisley Ian	45b	Landscape Photography	Darley Dale
Daley Diane	60a	Mosaics	Derby
Daniel Jerry	40c	Pictorial landscape photography	Holymoorside
Derbyshire Gerry	3	Alcohol ink on glass	Glossop
Davies Giles	56	Magazine Collage	Ilam
Davies Stevie	54	Fused Glass	Wirksworth
Deegan Sally	58l	Inks & mixed media	Sudbury
Dignam Danielle	45	Painting, recycled paint	Darley Dale

Dodd Susan
Domleo Helen
Dunn Cath
Eastop Rachel
Edwards Louise
Elliott Steve
Evans Alison
Evans Rachel
Evans Alison
Evans Lynne
Everett Olinda
Eversfield Susan
Fearne Peggy
Fraser Faith
Frost Harry
Gardner Sue
Gilley Judy
Gostick Gilly
Gray Ruth
Green Diana
Green Rebecca
Greendoor Print Making Studio
Greenhalgh Darrell
Greenhalgh Joy
Grice Carly
Grieve Stephen
Halliday Colin
Hazelwood Colette
Helm Barbara
Hermansen John
Heywood Denise
Heywood Karen
Hicks Pippa
Hill Michael
Hobson Jean
Holbrook Oksana
Hollis Kath
Holt Adrian
Hoodith David
Hoten Emma
Hoyle Jan
Hudson Val

40d Mixed media
58i Eco Sterling Silver Jewellery
11c Painter & printmaker
7 Illustrator
56 Printmaker, lino
45b Pastels Landscapes
45a Paper & Textiles
56 Woven willow baskets
13 Bags & quilts
36a Painting
44h Ceramics
1 Mixed Media
44g Textiles
5 Ceramics
16 Contemporary Oil Painting
63b Oil Painting
56 Painting
14 Drawing, Painting, Mixed Media
53 Fine Art Painting
45a Eco Landscape Painter
43 Jewellery, Sculpture
60a Printmaking
43 Glass Art
43 Glass Art
8 Sculpture (Stone)
7 Jewellery/Gold-smithing
57 Painting
22 Contemporary Jewellery
7 Various media
53 Studio Pottery
1 Painting Watercolours & Mixed Media
1 Painting
1 Painting
60a Abstract Artist
1 Painting & Prints
51a Textiles/Rag Rugs
44e Ceramics & Pictures
1 Ceramics, Mixed Media, Sculpture
9e Paintings & prints
20 Contemporary landscape oil paintings
21 Felt Art
34 Oil & wax painting

Holymoorside
New Mills
New Mills
Hayfield
Ilam
Darley Dale
Darley Dale
Ilam
New Mills
Chesterfield
Darley Dale
Glossop
Darley Dale
Hayfield
New Mills
Melbourne
Ilam
New Mills
Wirksworth
Darley Dale
Rowsley
Derby
Rowsley
Rowsley
Hayfield
Hayfield
Ashbourne
Chapel-en-le-Frith
Hayfield
Wirksworth
Glossop
Glossop
Glossop
Derby
Glossop
Tansley
Matlock
Glossop
New Mills
High Peak
Chapel-en-le-frith
Barlow

Hughes Amanda
Humberstone Anne
Hunter Laura
Hythc Andrea
Isles Julie
Jackson Felicity
Jackson Jeannette
James Alison
Janetta Louise
Jansen Steph
Jones Christine
Jones Heather
Jones Naomi
Karlsson Ingrid Katarina
Kelly Chantel
Kent Rosie
Keogh Jo
Kime Adele
Kisby Jo
Lane Patricia
Langley Mark
Larkin Graham
Leggett Julie
Lewis Zaza
Lolljee Natasha
Longmate Carl
Longmuir Craig
Lowe Caroline
Lyon Ann
Mail Colin
Marsden Ruth
Mason Jonathan
Mather Jenny
McCall Susan
McConnell Amanda
McFarlane Caroline
McKenzie Jenny
Menary Ann
Merriman Jennie
Money Hazel
Morley Sarah
Moss Linda

63a Painting / Oil Pastel
9a Textile Art
7 Leather-work, jewellery, Textiles
45a Painting Landscapes
7 Textiles
60a Watercolours
33a Mixed media, textiles & Printing
42 Contemporary quilt
45d Textured mixed media, sculpture
45a Wet Felt Painting
45a Lino Collagraph Printmaker
1 Mixed Media
53 Photography
21 Mixed Media Art
53 Stained Glass
17c Jewellery
40g Ceramics
11e Jewellery
1 Oil & Charcoal Portraits
37 Contemporary Landscape Artist
45c Art - mainly landscapes
1 Painting & Digital Art
45a Mixed Media
60b Card & fabric art
15 Multi Media
11a Landscape painter Oil
45b Landscapes in oils
61 Fine Art Painting
5 Ceramics & Stoneware
4 Woodturner
9c Painting
35 Oil Paintings Portraits Landscapes
46 Painting in watercolours & rich oils
5 Abstract Landscape Paintings
45a Photography
40i Portraiture; Landscapes; still life
43 Impressionist Artist
44c Art Textiles
44a Weaving, 3D, Print
51d Painter & Printmaker
26c oil painting, charcoal, mixed media
4 Textile Artist

Melbourne
New Mills
Hayfield
Darley Dale
Hayfield
Derby
Dronfield
Beeley, Matlock
Darley Dale
Darley Dale
Darley Dale
Glossop
Wirksworth
Chapel-en-le-frith
Wirksworth
Whaley Bridge
Holymoorside
New Mills
Glossop
Elmton
Darley Dale
Glossop
Darley Dale
Derby
Birch Vale
New Mills
Darley Dale
Mickleover, Derby
Hayfield
Glossop
New Mills
Chesterfield
Darley Dale
Hayfield
Darley Dale
Holymoorside
Rowsley
Darley Dale
Darley Dale
Tansley
Buxton
Glossop



Mulroy Susan	48b Ceramic	Matlock	Smart Pam	26a Fine Art Painting	Buxton
Nadin Bethan	45b Acrylic Landscapes	Darley Dale	Smeeton Liza	42 Mixed Media \$ Textiles	Beeley, Matlock
Nason Lesley	58b Porcelain wall art	Sudbury	Smith Alison	40f Handcrafted silver jewellery	Holymoorside
Nason Terry	58b Thrown Functional Stoneware	Sudbury	Spencer Jo	43 Mosaic Art	Rowsley
Neilson Louise	21 Ceramics	Chapel-en-le-frith	Stanley Julie	53 Textiles	Wirksworth
Nelson Nelson	17d Drawing	Whaley Bridge	Steeden Margaret	21 Textile Art	Chapel-en-le-frith
Newman Maria	42 Modern quilts & Fine Textiles	Beeley, Matlock	Stephenson Kathy	31 Glass (fused & stained)	Hathersage
Noble Fenella	44f Sculpture	Darley Dale	Stowell Kay	4 Glassmaker	Glossop
Novitzky Jan	42 Contemporary Textiles & Mixed Media	Beeley, Matlock	Sunter Abbie	60a Ceramics, Contemporary Sculpture	Derby
O'Brien Patricia	36c Printmaking	Chesterfield	Swift Cleo	36b portraits & craft	Chesterfield
O'Connell Sharon	45a Textile Artist	Darley Dale	Swift Elizabeth	19 Textiles, mixed media, drawings, ceramics	Whaley Bridge
O'Donoghue Beverley	21 Landscape Painting	Chapel-en-le-frith	Taylor Chris	1 Calligrams & Handwriting	Glossop
Olumide Susan	63d Ceramics	Melbourne	Taylor Lynne	1 Ceramics	Glossop
Orme Sandra	27 Fine Art Pastels & Charcoal	Buxton	Taylor Ruth	15 Textiles	Birch Vale
Owen Jo	44d Fine Art Textiles	Darley Dale	Taylor Vanna	51c Pottery	Tansley
Pandit Chhaya	45 Painting	Darley Dale	Thomas Christine	60a Textiles, Mixed Media	Derby
Parkin Sarah E A	40e Watercolour Landscape Painting	Holymoorside	Thomas Jenny	51h Ceramics	Tansley
Parkin Simon	2 Paintings	Glossop	Toft David	5 Photography	Hayfield
Perkins Helen	48c Fine Art Painting	Matlock	Toft Jo	5 Ceramics & Stoneware	Hayfield
Perkins Sarah	60a Animal Art & Pet Portraiture	Derby	Turner Tracey	7 Illustrator & Ceramics	Hayfield
Perks Jeff	28 Ceramic Sculpture	Tideswell	Vanic Sarah	51j Ceramics	Tansley
Petit Thomas	56 Glass-blowing	Ilam	Vasey Alison	10 Landscape Painting	New Mills
Pettinger James	60a Hand Thrown Pottery	Derby	Vaudin William	40j Digital Art, Drawing, Painting	Holymoorside
Polmear Joanne	45b Watercolour, oils & mixed media	Darley Dale	Voyce Tom	62 Painting	Repton
Prince Sue	56 Contemporary folk artist	Ilam	Wake Alison	29 Textile Art	Buxton
Rawlings Cass	33a Mixed media, textiles & Printing	Dronfield	Walton Mo	44b Paintings & Silver Jewellery	Darley Dale
Rix Pete	58k Rocking Horse Maker	Sudbury	Watson Kathryn	26b Sculptural Ceramics	Buxton
Robson Ann Christina	41 Hand woven textiles	Holymoorside	Wellby Liz	45b Drawing, print & sculpture	Darley Dale
Rose Tim	56 Oil & watercolour painting	Ilam	Westwood Kate	63f Painting	Melbourne
Rothwell Jenny	9b Jewellery	New Mills	Wilbraham Cheryl	56 Watercolour painting	Ilam
Russell Sue	60a Handwoven Wall Art	Derby	Wilding Eilean	41 Textiles mixed media	Holymoorside
Sampson David William	58e Ceramics, Sculpture, Children, Clay	Sudbury	Wilkinson Lynne	32 Fine Art, Originals, Prints	Dronfield
Sampson Valda	40b Embroidery & Painting	Holymoorside	Williams Karen	58a Sculpture	Sudbury
Sharliss Beth	50 Jewellery	Matlock	Wilson Cathy	58f Fused & stained glass	Sudbury
Sheldon Karin	56 Jewellery	Ilam	Wilson Rob	17b Mixed Media Art	Whaley Bridge
Sherwin Ben	58j Paintings & Prints	Sudbury	Wilson Sally	17a Textile artist	Whaley Bridge
Shore Jude	42 Contemporary Textiles & Fine Art	Beeley, Matlock	Withers Penny	11b Ceramics	New Mills
Sidwell Emma	11f Pen, Watercolour, Jewellery	New Mills	Wood Leigh	58c Metal work / sculpture	Sudbury
Sillar Vivienne	40a Ceramics	Holymoorside	Wotton Debbie	13 Patchwork & Quilting	New Mills
Singer Pete	44i Ceramics	Darley Dale	Young Joy	13 Knitting & Crochet	New Mills
Singleton Vikki	51e Ceramic Animal Sculpture	Tansley	Zubair Sadia	60a Handmade Textile Products	Derby
Sloman Martin	52 Watercolours	Cromford			



DERBYSHIRE OPEN ARTS 2022

Saturday 28th and Sunday 29th May 2022



www.derbyshireopenarts.co.uk