

DERBYSHIRE OPEN ARTS 2016

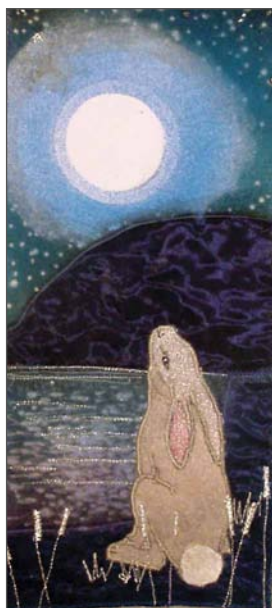
10th Derbyshire Open Arts Anniversary 2006 - 2016



With 294 participating artists

FREE brochure and FREE admission to artists venues countywide

Bank Holiday weekend 28th, 29th, 30th May

Opening hours 10am-5pm

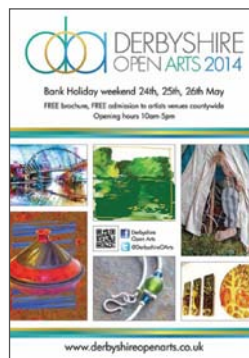
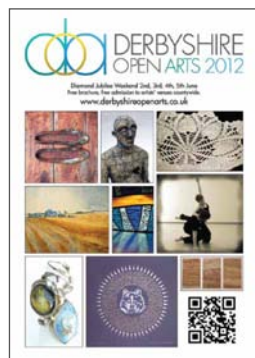
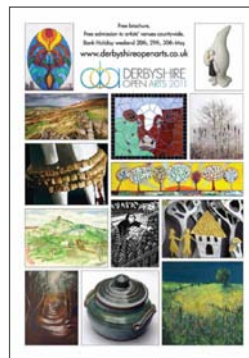
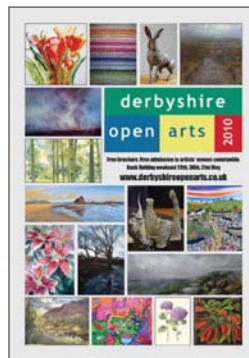
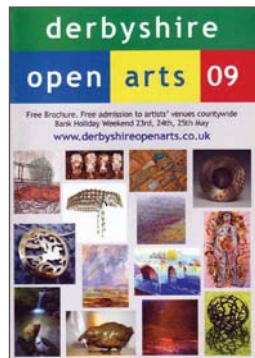


 Derbyshire Open Arts
 @DerbyshireOArts



www.derbyshireopenarts.co.uk

Derbyshire Open Arts celebrates 10 Years of Open Arts with our 10th Anniversary Showcase featuring 294 artists exhibiting all across Derbyshire.



Welcome to Derbyshire Open Arts!

Bank Holiday weekend Saturday 28th, Sunday 29th, Monday 30th May

Opening hours 10am-5pm unless otherwise stated in individual entries.

Derbyshire Open Arts is a not for profit open arts event that takes place in various venues across Derbyshire. The event takes place annually in the Spring Bank Holiday weekend at the end of May. Each year nearly 300 Artists and Craftspeople display their work in separate venues and invite the public to view and purchase work as well as take the opportunity to meet the visual arts professionals and find out more about what they do.

The inaugural Derbyshire Open Arts event was held in 2006 and marked the beginning of a popular county event. The event runs entirely on Artists' subscriptions and voluntary manpower from the Committee members. The organisation is formally constituted and exists by and for its members, who are artists and craftspeople and interested parties in the arts countywide across Derbyshire. We are currently applying to become a charitable organisation: by the time this brochure has gone to print we will have probably become one! For more information about the team who keep the event running, see pages 42 and 43 near the back of this brochure.

Each year our visitors make around 17,000 visits to our venues at our event and make a day of it over the Spring Bank Holiday. The event is **free** and family friendly. We cannot send out brochures by post to the public any more due to postage costs, but we do place brochures across and beyond the county in libraries, tourist information centres, many other visitor centres and at local shops and with our artists. A copy of the brochure is placed on our website and further details of artists taking part can also be found on there.



Derbyshire Open Arts Contacts

We welcome all feedback, both positive and negative, from all sources. If you have any comments about this brochure, our website, other media, or any other matter, do please let us know so that we can improve things for next year!

Our contact email is info@derbyshireopenarts.co.uk.



Facebook/[com/derbyshireOarts](https://www.facebook.com/derbyshireOarts)



@derbyshireOarts

If you are an artist not taking part this year, but may be interested for 2017, contact us now on the above and we will put you on our mailing list to receive an invitation for next year's event. If you are an arts organisation or other arts professional, you may also wish to contact us to be placed on our mailing list, if you have not already done so. If you are a business wishing to advertise with us next year, please also contact us for future brochures.

Chair, Ally Rodgers



Made in Derbyshire is a celebration of people, places and products, exploring the rich cultural life of our county.

Please go to madeinderbyshire.org to join.



How to use this brochure

Artists are listed in approximate order of the geographical location of their venues on the map in the centre pages. The map is an overall guide only. On the artist's entry there is a description of the work, venue contact details and directions (provided by the artists). A grey background denotes artists sharing a venue, with the directions to the venue at the top. Detailed location maps can be found by entering the post code at any map website.

Every effort has been made to ensure the information is accurate, however if you are making a special trip or travelling a long distance, we advise you to check with the artist in advance to confirm availability.

01

The reference symbols used on the artists' pages are:

- C = Commissions undertaken
- T = Teaching, workshops, demonstrations or talks undertaken.
- D = Fully disabled access
- d = Partial disabled access
Not all venues have disabled access; please check by contacting the artists for more information
- P = Preview evening on Friday 27th May to which all are welcome.
Please email/phone the artist in advance for details if you wish to attend a Preview Evening

The images on the front and rear covers are works by participating artists.

The images inside the brochure which are not on the artists' pages were taken by Mark Pereira at the 2014 event.



SPRING INTO SUMMER

28th May – 5th June 2016

At The Art Room, Barlow S18 7TE

Open all week 10am – 5pm daily

Textile Art and Sculpture by 6 Artists
Including some selected work at reduced prices

Disabled Parking and Toilet available
0114 289 0380 theartroom@dianegilder.co.uk



Landscapes
garethbuxton.com



Painting Holidays in Italy



- Fully organised painting holidays in high standard hotels, professional tuition for all levels of ability, excellent food, wine and interesting excursions.
- Perfect holiday for people travelling alone or friends/partners who wish to come on the holiday together but do different activities (cooking or photography available).
- Over 85% of our guests return every year – some even three times in one year!
- Painting Holiday to Venice combined with the opera "La Traviata" at La Fenice
- Painting Holiday to Lake Garda combined with operas "Carmen" or "Aida" at the Verona Arena
- New tutors for next year including Chris Forsey, Charles Mitchell and Adrian Wiszniewski




The Sunday Times' choice for "Top 100 Holidays for 2015".

www.paintinginitaly.com
Freephone: 08081185729 • Email: info@paintinginitaly.com





**Nationally
Acclaimed Artist**

**Working in
Acrylics and Mixed
Media.**



**Commissions
Undertaken**

**Individual
Group Tuition**

T 07967 316622 www.connollyart.com

Open Studio and Sale 28th - 30th May 2016

Ormscliffe Studio/ Gallery - 16 Langwith Road, Bolsover, Chesterfield, Derbyshire. S44 6HQ

PEAK DISTRICT ARTISANS

SPRING ARTS WEEKEND 2016

25th

ANNIVERSARY

**PEAK
DISTRICT
ARTISANS**

AT THE WHITWORTH CENTRE, DARLEY DALE

SAT 28TH, SUN 29TH & MON 30TH MAY

23 PDA members will be taking part in this Bank Holiday Weekend event at The Whitworth Centre, Darley Dale, Matlock DE4 2EQ

23 MEMBERS TAKING PART

Brian Robinson	Justine Nettleton
Maggie Robinson	Brenda Ford
Liz Wellby	Jenny Mather
Cheryl Wilbraham	Vivienne Sillar
Keith Wright	Gary Sampson
Karin Sheldon	Sarah Sharpe
Janine Mannion-Jones	Lucy Palmer
Emma Sidwell	Juliet Forrest
Steve Elliott	Sandra Orme
Temima Crafts	Mark Langley
Sue Gorman	Ingrid K. Kemp
Roger Waterhouse	

FREE ENTRY

The Whitworth Centre,
Station Road, Darley Dale,
Matlock DE4 2EQ
Sat: 10am-5pm
Sun & Mon: 10am-4.30pm

Facebook: PeakDistrictArtisans
Twitter: @pdartisans #WantThatArt
www.peakdistrictartisans.co.uk



Calling Notice

Would you like to get involved with Derbyshire Open Arts?
We have a lovely active committee and need a couple more
people, including someone to take on the role of Chair, to
join us for 2017.

If you are interested please contact us: derbyshireOarts@gmail.com

'Like us' for a chance to win a set of brushes from Rosemary & Co.

Rosemary & Co. makers of finest quality handmade brushes have kindly
donated brushes to Derbyshire Open Arts for us to give away.

All you have to do is go to the Derbyshire Open Arts facebook page and click 'Like'.
A 'Liker' will be selected at random on Monday May 30th and the winner will be
Notified asap afterwards.

Rosemary & Co
The Finest Quality Handmade Artists' Brushes

Open Exhibition
Join us... **Saturday 28th and Sunday 29th May**
to buy Great Art at Great Prices.
Melbourne Assembly Rooms,
High Street DE73 8GJ

MAKE A DATE...

Festival
melbourne

Art Trail
- 120 Artists in 70 Venues -
Saturday 17th and Sunday 18th September
Art, Music, Food and much more...
Melbourne, Derbyshire DE73 8GJ

WWW.MELBOURNEFESTIVAL.CO.UK TELEPHONE: 07765 819428 INFO@MELBOURNEFESTIVAL.CO.UK

bluebells. real dairy ice cream

Tea Rooms & Luxury Artisan Ice Cream

Visit us at: Bluebells, Brunswood Farm, Locko Road,
Spondon, Derby, DE21 7BU.
f: facebook.com/bluebelldairy
t: 01332 673924

www.bluebelldairy.co.uk

artsderbyshire
Arts events and information

Check out the artsderbyshire website

- * Find out what's on and where
- * Get our free e-newsletter delivered to your inbox
- * Get listed in our artists' directory
- * Use our site to promote your events
- * Publicise your venue in our directory
- * Find out about training opportunities and jobs

artsderbyshire is a quick and easy way to find out about Derbyshire's vibrant arts scene

www.artsderbyshire.org.uk

2016

open up

Artists open studios

Sheffield and South Yorkshire
Saturday 30 April
Sunday 1 May
Monday 2 May
Saturday 7 May
Sunday 8 May
11am - 5pm

www.openupsheffield.co.uk

ARTS IN THE VILLAGE festival

MAY 28TH, 29TH & 30TH

We are excited to be hosting our second
'Arts in the Village Festival' with over 20 artists
exhibiting as part of Derbyshire Open Arts 2016.

With live music, entertainment, children's
activities, street food and much much more!



Peak
Shopping
VILLAGE

DERBYSHIRE
OPEN ARTS 2016

THE
OLD STATION
GALLERY

Peak Shopping Village, Chatsworth Road, Rowsley, Derbyshire DE4 2JE
Visit www.theoldstationgallery.wordpress.com or follow us: Facebook Twitter



Art holidays in beautiful Exmoor
www.shorlandoldfarm.co.uk

Beautiful location, good food, friendly atmosphere
Courses for all abilities; Non-painting partners welcome
Other group bookings also welcome

Tel. Sandy or Mark 01598 763505

Email: enquiries@shorlandoldfarm.co.uk

Open
Studios
Notts
MAY-JUNE 2016
www.osnotts.co.uk



OPPORTUNITIES TO SEE AND BUY
CONTEMPORARY ART & CRAFT
OVER 250 ARTISTS AND MAKERS
INVITE YOU TO VISIT THEIR
STUDIOS AND LINKED EVENTS
IN NOTTINGHAMSHIRE
INCLUDES CENTRAL EXHIBITION AT
PATCHINGS ART CENTRE
16 APRIL - 30 MAY

SEE WEBSITE OR PICK UP A BROCHURE IN NOTTINGHAMSHIRE LIBRARIES



CALLINGTON SCHOOL OF ART - CORNWALL 01579 383491

'a great deal more than just a painting holiday...'

We are a residential art school based in Cornwall offering residential courses all year for artists of all abilities.

- Courses in drawing, painting, printing and mixed media
- 'Visit Britain' 4 star accommodation in our georgian town house
- Small groups with individual tuition
- Location in an Area of Outstanding Natural Beauty
- Trips to a variety of local beaches and cornish moorland
- Experienced tutors for all levels
- Spacious light studio and workshops



info@callingtonartschool.com

www.callingtonartschool.com

01

CTD

Deiniol Williams

I make two distinct types of ceramic: Earthenware tiles inspired by medieval designs and geometric patterns, and wood-fired stoneware with ash glazes which incorporates locally sourced stones and minerals mixed into the clay.

39 Pikes Lane, Glossop. SK13 8EA
07866 266861 • mail@deiniolwilliams.uk
http://www.deiniolwilliams.uk

From Buxton, (A624) take a left onto Hollincross Lane (just before the Crown Inn), continue 350 yards (changes to Pikes Lane). Venue opposite Red Rose Shop. On-road parking and some off-road parking at the side of the venue.



02

CT

Brook Street Studios

Brook Street Studios, Glossop is a group of five artists. Barbara Helm and Carol Beckett are printmakers. Carmen Etches is a surface pattern designer and both Glo Palmer and Jacqui Bayliss produce stained glass pieces, with Jacqui producing silver and recycled tin jewellery.

Brook Street Studios 1st Floor, Brook Street, Glossop. SK13 8BG
07825 252003 • barbara.helm@hotmail.co.uk

We are off High Street West and as you come into Glossop, passing Tesco on your left, Brook Street is the 4th right turn. Sunday will be 11am until 4pm.



03

CTD

Simon Parkin

Established artist, exhibiting nationally, heavily textured paintings inspired by the dramatic light and space as well as the ever changing colours and textures of the Peak District.

Simon Parkin Studio Gallery, 43 High Street East, Glossop. SK13 8PN
01457 855936 • simon@simonparkin.co.uk
www.simonparkin.co.uk

Two minutes from the central set of traffic lights in Glossop town centre, head towards Sheffield on the A57. I am on the left next to the Photographers opposite Esso garage.



04

CTD

Hayfield Artists @ Ashlar Studio

Susan McCall - drawings and paintings inspired by the light and atmospheric changes in the landscape. Katy McCall Medway - lively colourful oil paintings, drawings and mono-prints celebrate local landscape. Artist, illustrator, signwriter Jim Medway - anthropomorphic drawings and linocuts for kids comics and books.

Ashlar, Market Street, Hayfield, High Peak. SK22 2EP
01663 742199 • mcallhayfield@gmail.com
http://www.hayfieldartists.co.uk

Ashlar is next to the Pack Horse pub, Market Street, Hayfield. Parking is on Market Street. Walk up the drive to Ashlar which is a modern detached house with solar panels.



05

CTPD

Hayfield Artists at Throstle Farm

LYNDON EVANS - Charcoal and watercolour, excited by the layers in landscape. DAWN HOLMES - Paintings in acrylic are inspired by the Peak District. PAT EVANS - Mixed media illustrating the light and rhythms of the moorland. MARIA TARNOWSKA - My unique ceramic designs featuring Natural Wildlife.

Throstle Farm, off Glossop Road, Little Hayfield., SK22 2NG
01663 742255 • throstlefarm@gmail.com
http://www.hayfieldartists.co.uk

Join the A624 in Hayfield and go towards Glossop. On entering Little Hayfield 30 mph area, with cottages on both sides, turn sharp right before the wooded area, up a steep tarmac lane to 'Throstle Farm', with ample parking.



06-07

2008 Hayfield Road, Birch Vale, High Peak. SK22 1DA

From the A6, turn towards New Mills and continue through traffic lights towards Hayfield. 2008 is on the right, about 200 yards before the Grouse pub/chinese restaurant.

06

Karen Heywood

Landscapes and figurative work done in a variety of media, often with mysterious or symbolic content.

01663 743489 • karen.heywood1@btinternet.com
www.karenheywoodartist.co.uk



07

C

Chris Taylor

Calligraphy & hand lettering carried out in a variety of media, usually in different inks. Subject matter varies between calligrams, often of birds & animals, poems & song lyrics, & a number of works with The Four Seasons as their theme.

01663 743489 • chrisftaylor44@btinternet.com



08-12

67 Mellor Road, New Mills SK22 4DP

A venue for 5 artists. From Market Street in New Mills, continue up the hill (Spring Bank) for approximately 0.3 miles. Turn left on to Mellor Road, the venue is on your left approximately 100 metres past the church. Please do not park directly outside the venue. A warm welcome with art, live music and free refreshments.

08

CPD

Jenny Rothwell

Handcrafted adornments reflecting aspects of the English Countryside alongside Silver and Sea Glass Jewellery inspired by my coastal explorations.

01663 741338 • jennyrothwell@outlook.com
https://www.facebook.com/jennyrothwelljewellery



08-12

67 Mellor Road, New Mills SK22 4DP

A venue for 5 artists. From Market Street in New Mills, continue up the hill (Spring Bank) for approximately 0.3 miles. Turn left on to Mellor Road, the venue is on your left approximately 100 metres past the church. Please do not park directly outside the venue. A warm welcome with art, live music and free refreshments.

09

CTPd

Ruth Marsden

Acrylic paintings and limited edition prints.

01663 742143 • 07779 724330

ruthmarsden1@btinternet.com



10

Cd

Paul Gent

On the spot drawings from life-mainly of Manchester and Derbyshire. Also travel poster inspired pictures.

07806 920313 • pablogent@yahoo.com

<https://about.me/paulgent>



11

CTPd

Anne Humberstone

Textiles and mixed media allow me to indulge my love of colour and texture. Organza, silk, velvet and other luscious materials are incorporated into 2D and 3D pieces inspired by nature.

07926 267712 • anne.owl@btinternet.com



12

CTPd

David Hoodith

Atmospheric interpretations of the Derbyshire landscape, and similarly inspired landscapes and seascapes of Crete.

01663 745216 • davidhoodith@gmail.com



13

CPd

New Mills Gallery

Original & handcrafted art, jewellery, sculpture, ceramics, photography, textiles, glass, wood, toiletries, gifts and cards - all from local artists who run the gallery ourselves. Work for all tastes and budgets.

12, High St, New Mills. SK22 4AL

07973 385713 • woodmaz55@gmail.com

The Gallery is found just down the High St by the bookshop, off Market St. Parking nearby. A short walk from New Mills Central station, the bus station and the Heritage Centre.



14

CTPd

The Textile House

Debbie, Sheila, Joy and Val invite you to an exhibition of modern and traditional patchwork, quilting, embroidery, crochet and knitting in the comfort of Debbie's house.

8, Stafford St., New Mills. SK22 4DR

01663 749741 • valcopestake@hotmail.com

From the centre of New Mills take Market St and then Spring Bank. Turn left onto Mellor Rd. Stafford St is the first on the right just before the Providence Church. Complimentary home made cakes and a cuppa.



15

CTd

Andrea Joseph

Illustration, sketchbook, art, urban sketching, extreme doodling.

128 Buxton Road, Furness Vale, High Peak. SK23 7PF

07548 669832 • andreaajoseph24@gmail.com

<http://andreaajoseph24.blogspot.co.uk/>

128 Buxton Road is on the A6, in Furness Vale - in between New Mills and Whaley Bridge. It is on the row of terraces just opposite Furness Vale Primary School.



16

Cd

Sarah Poynter

My work is very process led with most pieces going through a series of processes before arriving at its final point. My work combines paint, photography and print with found images and textures to create abstract landscape based images.

14 New Horwich Road, Whaley Bridge, High Peak. SK23 7LG

07545 776690 • skpoynter@hotmail.com

<http://www.sarahpoynter.co.uk>

From the centre of Whaley Bridge travel up Old Road and take the second road on the left. From Chapel en le Frith turn right at Nimbus Antiques onto Old Road and take the first right after the bridge.



17

C

Rob Wilson

Award winning artist, Rob Wilson is one of the most exciting contemporary artists in the UK. His vibrant cityscapes incorporate layers of paint, print and stitching vividly depicting the energy and drama of living and working in the metropolis.

Above 13-15 Market Street, Whaley Bridge. SK23 7AA
07801 813049 • rob@robwilsonart.co.uk
<http://www.robwilsonart.co.uk>

Usually at his house, this year Rob opens his studio in the middle of Whaley Bridge, which is situated above Gascoigne Halman Estate Agent. The door is in the courtyard around the back (green door).

Open Sat 28th, Sun 29th and Bank Holiday Monday 30th, 10am-5pm



18

CT

Pear Tree Cafe

Jill Kerr - Printmaker specialising in linocuts with subjects including birds, flowers and the local environment. Paul Morin - Small colourist oil paintings and abstract assemblages from found objects. Lynne McPeake - Abstract and impressionistic photographs of the natural world.

The Pear Tree Cafe, 10 Canal Street, Whaley Bridge. SK23 7LS
01663 719811 • spark_cc@yahoo.co.uk

Canal Street is the road leading to the canal basin, off the main A5004 which runs through the centre of Whaley Bridge. The entrance to Canal Street is opposite Whaley Bridge Station. Parking on street and public car park behind.



19-21

9 Rock Bank, Whaley Bridge, High Peak. SK23 7LE

From Whaley Bridge turn left at the Bike Factory onto Old Road. Then Rock Bank is the third on the left. Park on Old Road and walk up the unmade road. For direct access please ring venue.

19

CT d

Kay Stowell

A Fused Glass artist who takes natural landscapes and objects as her focus. Inspired by the interaction of light, Kay plays with designs which showcase the beauty of glass. Work includes wall hangings and bowls, as well as range of dichroic and contemporary jewellery.

07860 940740 • kay@simplyglassuk.co.uk
<http://www.simplyglassuk.co.uk>



20

T d

Helen Brocklehurst

Watercolour landscapes of Derbyshire. Ceramics combined with molten glass including reticulated pieces, bowls and wall plaques.

01663 735257 • hbrocklehurst@whaleyb.plus.com



19-21

9 Rock Bank, Whaley Bridge, High Peak. SK23 7LE

From Whaley Bridge turn left at the Bike Factory onto Old Road. Then Rock Bank is the third on the left. Park on Old Road and walk up the unmade road. For direct access please ring venue.

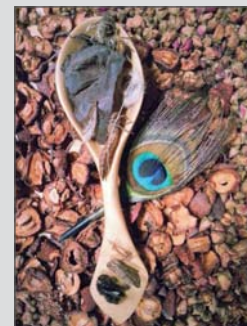
21

d

Andy Comley

Andy screens a short film Zanni and the Mountebank, in the style of the traditional medicine show and exhibited in an atmospheric pop-up cinema. An opportunity for guests to participate in live acoustic music. Artistic partnerships, residencies and history of work found at www.acomley.com.

07719 389091 • andy@acomley.com
<http://www.acomley.com>



22

Cd

Tamsin Cunningham

I handmade contemporary wall pieces. I am fascinated by repetition, inspired by the things we see everyday - road markings, signs, buildings and landscapes. I handmade and manipulate materials with the idea of making textures and surfaces appear different to what they actually are.

20 New Horwich Road, Whaley Bridge, High Peak. SK23 7LG
07977 519843 • tamsinc@yahoo.co.uk
<http://www.tamsin.biz>

Coming through Whaley Bridge with The Bike Factory on your left, opposite the Coop, turn left up Old Road and then 2nd left up New Horwich Road. This is a no end road.



23

d

Graham Pigott

Paintings, collaged and mixed media drawings, collagraph prints, multi-colour monoprints, all exploring landscape, still life and the figure, influenced by a love of colour, form, texture, pattern and abstraction. (75% of sales, ie after costs, is given to charity).

Tanners House, 5A Goatscliffe Cottages, Main Road, Grindleford. S32 2HG
01433 639641 • graham.pigott@btinternet.com
<http://www.grahampigott.co.uk>

Entering Grindleford from Calver on the Main Road (B6001), 5A is on right by the first bus stop and unmade lane at the bottom of the hill. Studio at rear accessed from lane. Open Garden, coffee, tea and cake available. Open all three days, but Sunday from 11am. On other days by arrangement.



24

CT d

Linda Moss: Sheep to Chic

Hand-made felt artefacts (hats, pouches, bags, jewellery, etc); hand-dyed, handspun wool yarns all from our own Shetland flock, local landscape paintings. See, feed and pet our friendly sheep, lambs and hens. Spinning demonstrations, home-made biscuits all on our hillside smallholding.

Brookfold, The Wash, Chapel en le Frith, High Peak. SK23 0QW
01663 750913 • linda@linda.moss.name
<http://www.lindamoss.co.uk>

Just off A6: up Bowden Lane from Chapel roundabout (take care!), left at T-junction at top, 400 yards down to broad gravelled driveway labelled Brookfold. Or from Hayfield Rd. Chapel, signs for Wash Village, keep right up hill 100 yards.



25-26

The Farming Life Centre, Blackwell Hall Farm, Blackwell, Buxton. SK17 9TQ

Approximately half a mile off the A6, five miles from Buxton and seven miles from Bakewell. From the A6 take the B6049 (signposted Tideswell), take the first left (signposted Blackwell), then third drive on the right (signposted Farming Life Centre).

25

CTP d

Nature:Art:Nurture

This exhibition promotes artmaking for health and wellbeing and as well as showcasing images made by groups connected to the Farming Life Centre this exhibition will give you the opportunity to join in with making art. Come and explore your creativity!

07779 263495 • nomadpotter@hotmail.com
http://thefarminglifecentre.org.uk



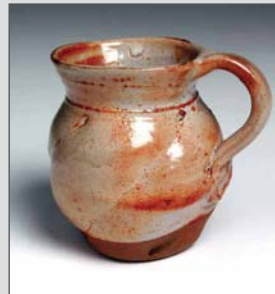
26

CTP d

Alan Hearsum, Sue Mulroy & Christine and Alan Wilson

The Wilsons: Large outdoor sculptures, furniture and small domestic ware carved from windfall green wood. Sue Mulroy: Wood fired ceramics, softly thrown domestic pottery and colourful raku jewellery. Alan Hearsum: An eclectic mix of paintings including a collaborative oil painting demonstration based on learning conversations.

07779 263495 • suemulroy@hotmail.com
http://thefarminglifecentre.org.uk



27

Cd

Take Ten

A wide selection of work in various media with a strong print/painting bias from a mature student collective at Leek College of Art. Etching, screenprints, collographs, carborundum prints, linocuts, painting in oils/acrylics/watercolour, sketches, papercuts, collage, photography, textiles. Affordable artworks from cards to canvases!

United Reformed Church Hall, Hardwick Square East, Buxton. SK17 6PT
07811 268885 • mariej_keane_55@yahoo.co.uk

From A515 turn at Potters clothes store on to Hardwick Street. Road curves right and climbs (Hardwick Mount) past Trinity Church on left. Continue straight up; URC Hall is at top of street on left before T-junction. Parking outside. Saturday 10am-5pm; Sunday Late Opening 12 noon-5pm; Monday 10am-5pm.



28

CT

Louise Jannetta

A wide variety of art and mediums, with 2D and 3D work on display. Work ranging from etching/collagraph prints to large oil paintings and on to relief sculpture.

The Louise Jannetta Gallery and Studio, Rear of No 24 Dale Road, Buxton, Derbyshire. SK17 6NL
07931 821191 • enquiries@louisejannetta.co.uk
http://www.louisejannetta.co.uk

The studio is off Dale Road (B5059) running from Morrisons roundabout to the junction of A515 to Ashbourne and the road leading to the Leek/Macclesfield roads. (B5058). Well signposted with an A board outside. Turn into small road for parking.



29

CT d

Louise Glasscoe

Hand-knitted and crocheted, individually designed clothing and accessories, including bridal wear; hand-crocheted jewellery; button and bead jewellery, often using recycled buttons and beads, threading on to leather thongs and silver and gold wire; felt-work; rug-work; soft furnishings.

The Piano Lounge, The Old Hall Hotel, The Square, Buxton, Derbyshire. SK17 6BD
01298 22256 • lucerneyarnwork@yahoo.com
http://www.lucerneyarnwork.artweb.com

Close to Water Street, A53 (St Johns Road), A5004 (Manchester Road), A515, the A6, Buxton Opera House, Buxton railway station, major bus routes.



30

CTP d

The Green Man Gallery

Exhibition of paintings, original prints, mixed media, photography, textiles and jewellery by the artist members of the gallery: Doug Agnew, Dawn Featherstone, Mara Edwards, Ilsa Elford, Fiona Jubb, Vicky Kenworthy, Penny Kill, Val Muir, Suzanne Pearson, Caroline Small. Demonstrations and activities in our Open Studio.

Hardwick Hall, Hardwick Square South, Buxton. SK17 6PY
01298 937375 • hello@thegreenmangallery.com
http://www.thegreenmangallery.com

Behind Buxton Museum and Art Gallery. From Market Place turn into Market Street then first left into Concert Place/Hardwick Square South. Hardwick Hall is the large Victorian building on left. Free parking at venue or park on Market Place (paying).



31-33

6 St James Terrace, Buxton. SK17 6HS

St James Terrace is right near the Park (Pavilion Gardens) and car parking is available in front of the property.

31

CP d

John Eastwood

I am a professional fine art landscape photographer specialising in the light and landscapes of the North West and attempting to capture a sense of the spirit of the natural environment. I work only with available light and without filters or digital manipulation.

07855 913983 • johneastwood@btinternet.com
http://www.photolandscapes.co.uk



32

CPT d

Carl Longmate

Oil painter, mainly painting from life. My work has a positive and optimistic slant with humour. I like to paint people, places, and events.

01298 938015 • longmatesnr@msn.com
http://www.carllongmate.co.uk



31-33

6 St James Terrace, Buxton. SK17 6HS

St James Terrace is right near the Park (Pavilion Gardens) and car parking is available in front of the property.

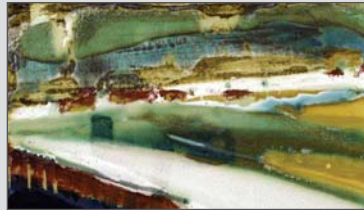
33

CP

Ché Finch

Ché Finch produces hand coiled ceramic vases and tiles with an autobiographical element. Fascinated by restricting visual narrative as a creational approach, with multiple layering of glazes, stains and oxides being indicative of her expertise. Her artwork is characterised by raw energy and expressive style.

07486 696420 • che@chefinch.co.uk
http://www.chefinch.com/



34-35

Unit 2A, Ladmanlow Yard, Leek Road, Buxton. SK17 6UQ

The workshop is located 2 miles south of Buxton. After the junction of A54 Macclesfield Rd continue up A53 Leek Rd. Turn right off the A53 into Ladmanlow Yard following signs for MCDC & D. O. A exhibition.

34

CPD

More Care Design Collective

More Care Design Collective est 2013 produces a range of 2D and 3D art pieces. MCDC work creatively with a range of materials producing artefacts from abstract paintings to sculpture and designed original furniture. MCDC = 9 adults with learning difficulties + 1 head designer.

07927 936766 • slbdesigner@gmail.com
https://www.facebook.com/mcdcboxton



35

CPD

Sarah Brindley

I design and make innovative sustainable furniture and interior wall and floor panels. I also develop prototype product designs with my group More Care Design Collective who are also based here in my workshop.

07927 936766 • slbdesigner@gmail.com
http://www.slbdesigns.co.uk



36-37

The Art Barn, Oakenclough Hall Barrow Moor, Longnor, Buxton. SK17 0QS

Located in postal Derbyshire, geographical Staffordshire. From Longnor take road towards Winking Man pub. After 1.5 miles turn left at Top House Farm and follow road and signs to The Art Barn crossing two cattle grids. Blue door up steps.

36

CTP

Jan Lewis-Eccleston

Porcelain and earthenware are used to create figurative marine-themed sculpture including ships manned by fools and beasts, nature-inspired abstract forms. Porcelain is also used to create a range of silver-mounted jewellery.

07852 177347 • jan_ile.ceramics@outlook.com
http://www.jleceramics.co.uk



36-37

The Art Barn, Oakenclough Hall Barrow Moor, Longnor, Buxton. SK17 0QS

Located in postal Derbyshire, geographical Staffordshire. From Longnor take road towards Winking Man pub. After 1.5 miles turn left at Top House Farm and follow road and signs to The Art Barn crossing two cattle grids. Blue door up steps.

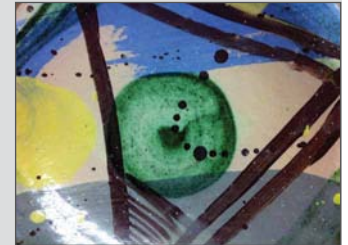
37

CTP

Sue Blatherwick

Colourful ceramics with energetic painterly marks and imagery, some abstract and some reflective of nature and the environment. Slip decorated earthenware bowls, dishes and domestic items as well as hand made tiles will be displayed in this lovely barn with a beautiful view.

07875 282267 • sue.blatherwick@virgin.net
http://www.sueblatherwick.me.uk/



38

CTD

Rachael Rastrick

Rachael turns jumble sale finds into original, unique and distinctive soft furnishings. Come and see an inviting mix of rag rugs, homely throws and gorgeous cushions. Demonstrations showing working methods and techniques. Workshop bookings. Tea and delicious homemade cakes baked by 'THE BAKEHOUSE'.

Baslow Methodist Church, School Lane, Baslow. DE45 1RZ
07986 511707 • rachael.rastrick@gmail.com

Saturday 10am-5pm Sunday 12 noon-5pm Monday 10am-5pm.



39

d

Lesley Platt

I design my own embroidery, often using paints as well as thread. I enjoy oil and pastel painting using the abstract as well as still life.

Ash House, Main Street, Great Longstone, Nr. Bakewell. DE45 1TA
01629 640065 • lesleyplatt@hotmail.com

Ash House is on the main street of Great Longstone next to The White Lion pub.



40

CTD

Great Longstone Village Hall

Jane Littlefield - stained glass, with glass painting; Su Woollen- pastel and charcoal drawings; Alan Grant - wood turned bowls; Mark Beresford - landscapes and cityscape paintings.

Great Longstone Village Hall, Church Lane, Great Longstone DE45 1TP
01629 640943 • Jane@janelittlefieldglass.co.uk
http://Janelittlefieldglass.wordpress.com

From the A6020 turn into Great Longstone. As you come through the village, the White Lion pub will be on your left. Church Lane is opposite the pub and the village hall is the first building on your right. Teas coffees and delicious home made cakes will be on sale in the village hall during the open arts event.



41

CT

Paula Sharples

Using acrylics, ink and graphite, mainly on linen but also paper and canvas, I build layer upon layer of paint to give a feeling of depth, often positioning flowers in favourite china against a landscape backdrop.

27 North Church Street, Bakewell. DE45 1DB
01629 259264 • paula.sharples@tiscali.co.uk
www.paulasharples.co.uk

From Rutland Square roundabout in Bakewell, go up North Church Street. Venue is approx 3/4 of the way up the hill on the right. Parking is available behind the church on Church Lane or in Bakewell centre.



42

C

Matthew Lovell

Wooden bowls, plates and objets d'art mainly made from local species of hardwoods. This venue is open year round by appointment and has sales weekends - see website or facebook woodatcc for details.

Christmas Cottage, Church Street, Yowlgrave. DE45 1WL
01629 636151 • matthew@woodturningatchristmascottage.co.uk
http://www.woodturningatchristmascottage.co.uk

Located in the centre of Yowlgrave between the Church and Post Office. Look for the black railings and bus stop sign outside on Church Street.



43

C

Lynne Wilkinson

Award winning international artist, obtained a BA (Hons) Degree in Painting and Printmaking. I paint most days working from my gallery on the fringe of the Peak District. This rural environment provides my artistic stimulation, to translate a passion for nature onto the canvas.

Summerley Hall, Summerley Lower Road, near Apperknowle. S18 4BB
07811 153705 • lynnewilkinson777@yahoo.co.uk
http://lynnewilkinson.co.uk

From Coal Aston take B5056 towards Eckington right on to Ash Lane before Wards Garden Centre. Turn right after 500 metres on to Summerley Lower Road, down the hill, bear right at grass triangle & Summerley Hall is on the left.



44

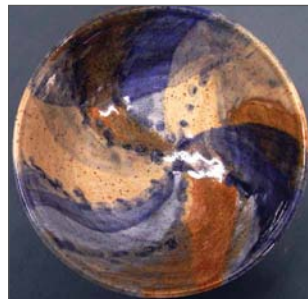
d

Maureen Greenland

Colourful mugs, bowls, jugs and vases, thrown on the potter's wheel - each one is unique, attractively decorated with patterns, swirls and bands.

Cartledge Cottage, Cartledge Lane, Holmesfield. S18 7SB
01142 890669 • mlg@holmesfield.plus.com

From the mini roundabout at Holmesfield, follow the signs down Cartledge Lane, and keep left at the junction. Or from Millthorpe, come up Millthorpe Lane and turn right at the junction with Cartledge Lane.



45

CTPD

John Connolly

Nationally acclaimed Landscape Artist. John is drawn towards the bleakest parts of the country where his stunning use of colour and texture capture a real sense of place to create work with drama and emotion. He welcomes visits to his Derbyshire studio.

16 Langwith Road, Bolsover, Chesterfield. S44 6HQ
07967 316622 • john@connollyart.com
http://www.connollyart.com

From Chesterfield, drive through Bolsover following road around past the Church on to Langwith Road. No 16 is on left. Bright blue dorma Bungalow. Studio-Gallery to rear of house.



46

Pd

Patricia Lane

Inspired by the landscape of the UK and Andalucia, finished paintings are not necessarily exact representations of any single place, more about the essence of the landscapes, but what's really important are the memories evoked by a particular location; atmosphere, colours and textures, weather conditions.

St Mary's House, Castle Street, Bolsover. S44 6PP
07840 246833 • mail@bradlane.co.uk
http://www.patricialane.co.uk

Follow the brown signs for Bolsover Castle. St Mary's House is next to the school building - which is adjoining the entrance to the Castle, on the junction of High St/Castle St/Castle Lane.



47-48

47

C

Chesterfield Museum and Art Gallery, St Mary's Gate, Chesterfield. S41 7TD

Across St Mary's Gate from the Crooked Spire in Chesterfield town centre, the Museum and Art Gallery is in the same building as the Pomegranate Theatre. Staff at reception will direct you to the upstairs Art Gallery.

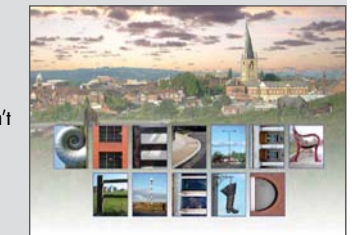
Normal opening times of the Museum and Art Gallery are 10am to 4pm on Mondays, Thursdays, Fridays and Saturdays. Regrettably, therefore, the gallery will not be open on Sunday. Please note, however, that this exhibition will remain on display until June 25th!

Andy Rodgers

In a departure from his Overground maps, Andy has used his photographs taken around Chesterfield to prepare some unusual greetings cards from the town. Don't worry, though - his Overground cards and mounted prints are still available too.

01246 230925 • andyrodgers.home@gmail.com

Committed to the Open Arts event itself, Andy will attend intermittently. Contact him 07951 125619.



48

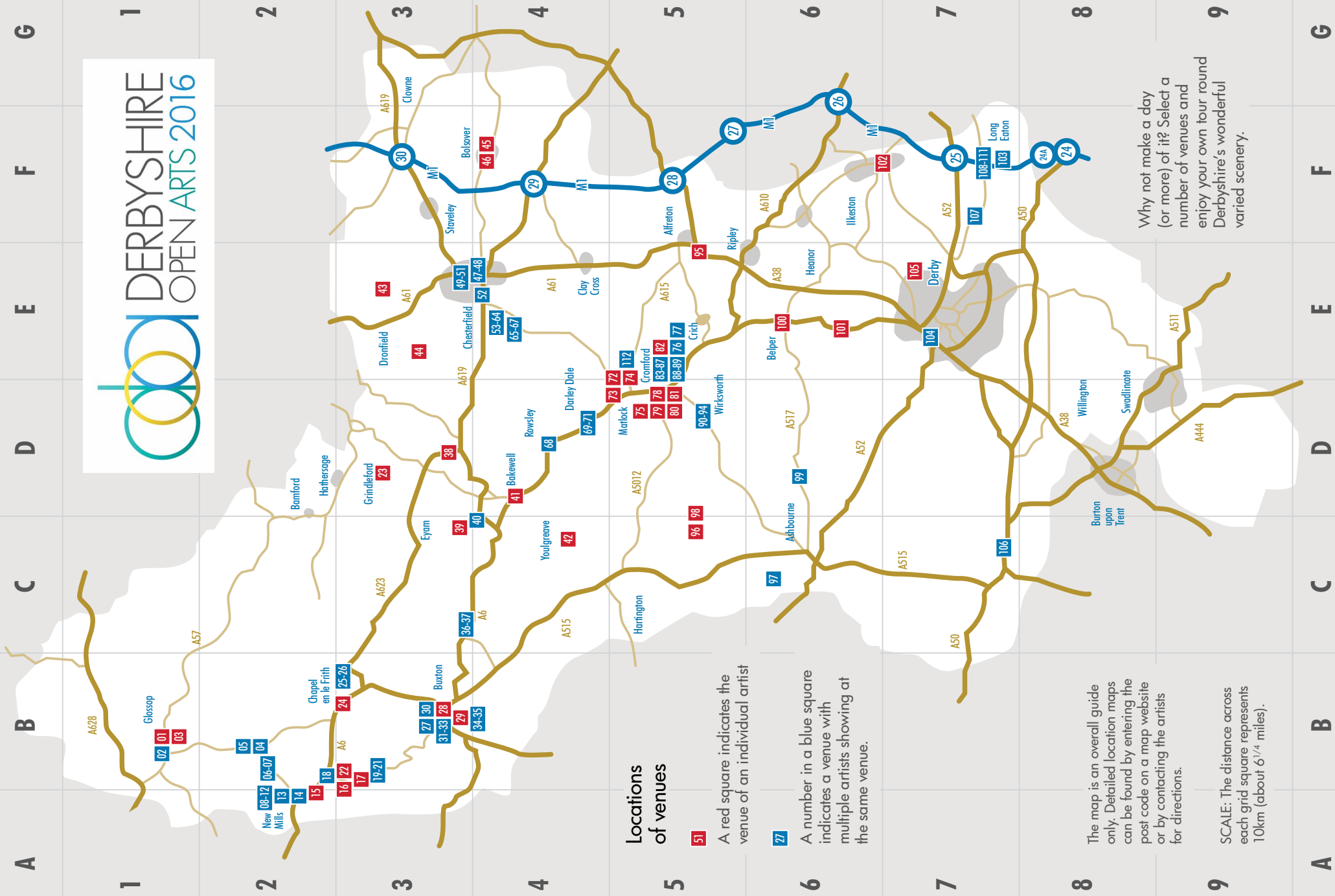
C

Barnes Fallon Herrmann Hodgkinson

Four artists in one venue: Alison Barnes = paintings (landscapes and semi-abstract water studies). Wayne Fallon = portrait paintings. Ingo Herrmann = photocollages. Neil Hodgkinson = iPad paintings (landscapes) and photography. All four of us will undertake commissions.

07870 489016 • indigo@hippodrome.fsnet.co.uk
http://www.sixstreetsarttrail.co.uk/alison-barnes





Locations of venues

51

A red square indicates the venue of an individual artist

27

A number in a blue square indicates a venue with multiple artists showing at the same venue.

The map is an overall guide only. Detailed location maps can be found by entering the post code on a map website or by contacting the artists for directions.

SCALE: The distance across each grid square represents 10km (about 6 1/4 miles).

Why not make a day (or more) of it? Select a number of venues and enjoy your own tour round Derbyshire's wonderful varied scenery.

49-51

West Studios, Sheffield Road, Chesterfield. S41 7LL

Situated on Sheffield Road (B6057) on the right as you leave Chesterfield town centre. Limited Parking onsite, but additional parking is available in the town centre at the donut roundabout, Holywell Cross and Saltergate car parks. Refreshments available.

49

CPD

Sue Wharton

I paint with melted beeswax to produce paintings and waxed photo art. I am inspired by nature, particularly the elements and the striking patterns of animal coats. I do vintage scented waxed portraits on commission. My work is also available printed onto mugs, cushions etc.

West Studios (Studio 4)
07471 195960 • suewharton.artist@gmail.com
<http://www.inuro.co.uk>



50

CPD

Aspire-Art

We represent natural images figuratively but with an individualistic slant. We emphasise particularly form and colour particularly the movement inherent in nature.

01246 500799 • thorpe.marion@yahoo.com



51

D

Student Showcase - Chesterfield College

Showcasing a range of work including painting, print, illustration, ceramics, silver work and fashion and textile products, produced through the development of professional portfolios. An opportunity to view work from the next generation of artists and makers that can't be missed.

01246 500799 • hello@weststudios.co.uk
<http://weststudios.co.uk>



52

CT

Monkey Park Artists

Derbyshire based artists: Helen Pollitt, Ceramic Artist; Karon Mather, Acrylic Painter; Guy Badham, Photographer; Caroline Bagnall, Pen-watercolour Painter; Deborah Miles, Recycled Tin Artist; Chloe White, Acrylic Artist; Helen Barber, Mixed Media Artist; Dawn Turner, Fired Glass.

The Monkey Park Community Centre, 128a Chester Street, Chesterfield. S40 1DN
07854 211985 • helenapol@hotmail.com

Monkey Park, a new social enterprise run by local people. There is a family friendly cafe that supports local artists; it offers office space & support for small community & digital businesses. All profits are returned to the local community.



53-64

Holymoorside Village Hall, Holymoorside Road Holymoorside, Chesterfield. S42 7DX

A619 Chatsworth Road Out of Chesterfield, left at the sign to Holymoorside into Holymoorside Road, Travel for half a mile and the village hall is on the left, just before the Bull's Head pub. Parking, refreshments, lunch and cake available.

Opening Times differ on the Saturday 11.00 to 5.00, otherwise 10.00 to 5.00 Sunday and Monday.

53

CTD

Olinda Everett

I work mainly in stoneware clay to build by hand pieces that reference traditional cultures and the person's impact on their environment. I emphasise texture and use slips and glazes to obtain multiple layers.

07971 240565 • olindaeverett@gmail.com
<http://www.olindaeverettceramics.weebly.com>



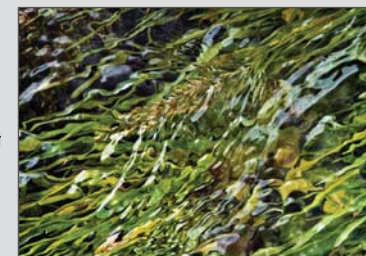
54

D

Jerry Daniel

My work is influenced by Romanticism and 1960's Op Art. I look for landscape features that will become compositional devices to help encourage ambiguity in the reading of the 2D picture space. Recent abstract geometric digital prints use principles of perception to inform their design.

01246 237937 • jerrydaniel@uwclub.net
<http://jerry-daniel.pixels.com>



55

D

Valda Sampson

Using fabric and thread or oil on canvas Valda seeks to capture the colours and textures of her environment. Inside her home, out in her garden or in the surrounding countryside are all subjects that inspire her.

01629 653814 • vgsamps@aol.com



56

D

Trudy Roe

Inspired by landscape and words I find expression in images and artists' books.

01246 569487 • trudy.roe@btinternet.com
<http://trudyroe-printsbooks.weebly.com>



53-64

Holymoorside Village Hall, Holymoorside Road Holymoorside, Chesterfield. S42 7DX

A619 Chatsworth Road Out of Chesterfield, left at the sign to Holymoorside into Holymoorside Road, Travel for half a mile and the village hall is on the left, just before the Bull's Head pub. Parking, refreshments, lunch and cake available.

Opening Times differ on the Saturday 11.00 to 5.00, otherwise 10.00 to 5.00 Sunday and Monday.

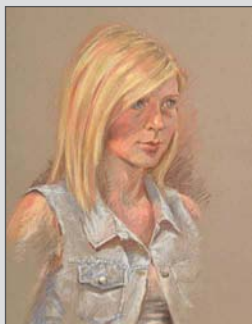
57

CTD

Caroline McFarlane

Portrait artist who also dabbles in other stuff.

01159 443411 • caroline@carolinesart.co.uk
http://www.carolinesart.co.uk



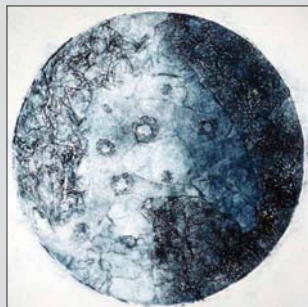
58

CTD

Jennie Merriman

I enjoy the freedom of working with Collagraph printmaking and take an experimental approach to the work which can be simple or complex with a variety of textures. Using both intaglio and relief methods of mark making gives many different possibilities.

01629 735883 • jennie@thestrarwofds.plus.com
http://www.jenniemerriman.co.uk



59

CTD

Darley Dale Print Workshop

An experimental peer led group of printmakers we come together every fortnight to develop our ideas and make Collagraph prints. Not being led by the traditional, we are also interested in developing possibilities of embellishment and enhancement whilst still keeping the integrity of the work.

01629 735883 • jennie@thestrarwofds.plus.com



60

D

Jill Askey

My work mainly focuses on rock formations and natural forms. I use the manipulation of fabrics using various techniques. Presently I am inspired by the design of frosted cobwebs in fields.

01433 631490 • jillaskey@denmancottage.freemove.co.uk



53-64

Holymoorside Village Hall, Holymoorside Road Holymoorside, Chesterfield. S42 7DX

A619 Chatsworth Road Out of Chesterfield, left at the sign to Holymoorside into Holymoorside Road, Travel for half a mile and the village hall is on the left, just before the Bull's Head pub. Parking, refreshments, lunch and cake available.

Opening Times differ on the Saturday 11.00 to 5.00, otherwise 10.00 to 5.00 Sunday and Monday.

61

CD

Roger Allen

A professional artist working in watercolours and oils, Roger's closely observed painting is renowned in Derbyshire. He has won the Derbyshire Open Watercolour prize on three occasions and been selected for exhibition at the Royal Academy and Royal Watercolour Society.

07816 434949 • roger@rogerallen.co.uk
http://rogerallen.co.uk



62

CD

Sarah EA Parkin

Derbyshire Dales landscapes in watercolour: This includes vistas of the 'less seen' aspects of local places near Matlock. I enjoy looking at the way built environment sits within the landscape; I aim to retain the integrity of the scene whilst responding in a sketched style.

01629 581058 • 07957 484977 • sarah@sarahparkin.co.uk
https://www.facebook.com/SarahEAParkinDerbyshireLandscapePaintings



63

CTD

Karen Herrick

I create colourful, layered textile wall art, machine, hand stitched & embellished as well as hand felted layered landscapes inspired by nature, faith stories and colour. My work is usually stylised or abstract, incorporating curved, undulating lines, buttons, beads and sequins to complete a piece.

07980 039647 • karen@harlequinarts.co.uk
http://www.harlequinarts.co.uk



64

TD

Gwenda Culkin

Textiles inspired by Japanese Boro cloths and clothes. Old fabrics and paper are used to produce new pieces by patching, piecing, layering and wrapping.

07780 435116 • gwendaculkin@yahoo.co.uk



65-67

United Reform Church, Cotton Mill Hill, Holymoorside S42 7EJ

From Sheffield: take A621 then right at junction then right onto junction onto A619, then left onto B6012. From Matlock: take A6 to Bakewell and then turn right onto Chatsworth Road: heading to Chatsworth House: take the 1st left.

Saturday: 11am - 5pm Sunday: 10am - 5pm Monday: 10am - 5pm.

65

CD

Sheila Baldock

Water colour and some mixed media.

01773 540325 • sheila@baldock34.plus.com



66

Cd

Geraldine Yvonne Smith

Geraldine is a contemporary mixed media artist & printmaker based in Wirksworth. Through experimentation she improvises unique multi-layered images. She further reinterprets, transforms and refreshes motifs employing varying degrees of collage, stitch, deconstruction & embossing. Artworks are unique one-offs pulled through her etching press.

07870 493289 • info@geraldineyvonnesmith.co.uk
http://www.geraldineyvonnesmith.co.uk



67

CTd

Ann Christina Robson

Woven work including tapestry pieces. Recycled textiles including pegged rag rugs. Fabric, paper and thread jewellery.

01246 866688 • annchristina28@yahoo.co.uk
http://www.dodekadesigners.co.uk



68

CTD

The Old Station Gallery

Over 20 artists, artisans & makers exhibiting their high quality work within The Old Station Gallery and The Peak Shopping Village. With live entertainment, free children's activities, street food & much more over the bank holiday weekend.

Peak Shopping Village, Chatsworth Road, Rowsley. DE4 2JE
07927 128989 • theoldstationgallery@gmail.com
https://theoldstationgallery.wordpress.com

From Sheffield: take A621 then right at junction then right onto junction onto A619, then left onto B6012. From Matlock: take A6 to Bakewell and then turn right onto Chatsworth Road: heading to Chatsworth House: take the 1st left.



69-71

The Whitworth Centre, Station Rd, Darley Dale, Matlock. DE4 2EQ

Situated in a delightful Victorian building on the A6 between Matlock and Buxton just a few miles outside Matlock. Plenty of easy free parking. Refreshments available all day at the Terrace Tea shop.

Open Saturday 10am-5pm. Sunday and Monday 10am - 4.30pm.

69

Cd

Cheryl Wilbraham

An award winning botanical artist producing fresh, vibrant and contemporary watercolours informed by botanical and other subjects. Cheryl holds a RHS silver gilt medal in botanical painting and is a member of the Society of Botanical Artists.

01332 703120 • cheryl@cherylwilbraham.com
http://www.cherylwilbraham.com



70

CD

Mark Langley

Highly detailed colour pencil drawings and watercolour paintings of landscapes, animals and architecture inspired by the Derbyshire Countryside. Originals and prints for sale, commissions undertaken.

07849 657898 • mark@mark-langley.com
http://www.mark-langley.com



71

CD

Peak District Artisans

Browse and buy from 23 members of Peak District Artisans who will be showing work including fine art, jewellery, ceramics, photography, woodturning and other contemporary arts. Many members are award winning and internationally recognised for excellence in their chosen field.

http://www.peakdistrictartisans.co.uk



72

CTd

Ann Bates

Individual, handmade vessels and tiles made from stoneware and porcelain clays. The vessels are built in layers using coloured clays to suggest landscape, whilst the tiles are textured or patterned with natural materials or symbols.

Oak Cottage, Lumsdale, Matlock, Derby. DE4 5LB
01629 55429 • ann@annbates.co.uk
http://www.annbates.co.uk

From Matlock town centre A615 Matlock Green. left at crossroads onto A632, Chesterfield Road. After 1 mile turn right Lumsdale Road. Pass Slacks garage, Highfields school and follow road to junction with Asker Lane. Take left fork follow DOA arrow.



73

CD

Miranda Gratton

Stained and Fused glass pieces.

Sunningdale 22, Edge Road, Matlock, DE4 3NH
07714 291214 • mirandag@btinternet.com

From Crown Square Matlock, take Bank Road as if going up the hill towards County Offices. Edge Road is the second left off Bank Road and Sunningdale is 200 metres on the right.



74

Pd

Eddie Hallam

I create life size sculptures of British Birds and Wildlife. They are cast in bronze in limited editions.

Riber Art Gallery, Greenways Farm, Riber, Matlock. DE4 5JU
01629 5833108 • eddiehallam@wildlifesculptures.co.uk
<http://www.wildlifesculptures.co.uk>

Riber Art Gallery is adjacent to Greenways Farm. From Tansley take Alders Lane (opposite the Royal Oak) and follow the road for 1 mile. Turn right into Riber Village (no through road) and take second driveway on the left.



75

CTD

Lizzie Adcock

My designs are inspired by historical textiles. I design and make a range of products from original artwork, screen and block printed fabrics, paper prints, embroidery kits, textile decorations for the home to sculpting pewter accessories.

Arum-Lilie Designs, Unit 204, Via Gellia Mills, Bonsall Matlock, Derbyshire. DE4 2AJ
07926 067423 • arumlilie@btconnect.com
<http://www.arumliliedesigns.co.uk>

Via Gellia Mills is on the A5012 about 1 mile north of Cromford Village, and just before the turning up to Bonsall Village. There is Free parking and wheel chair access to my studio.



76

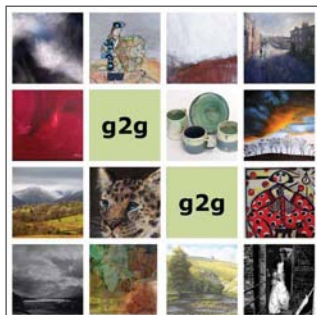
CTd

gallery 2 gallery

A g2g venue for 14 artists Heather Duncan, Paula Hallam, Ruth Gray, Emma Farrow, Garden Gallery, Jonathan Shepherd, Martin Davis, Natasha Braithwaite, Trish O' brien, Valerie Dalling, Twisted Images, Treehuggery, Sharon Lysinger, Colin Preston. An exciting mix of photography, ceramics, textiles and fine art.

Florence Nightingale Memorial Hall, Yew Tree Hill, Holloway, Nr Matlock. DE4 5AR
07941 494954 • ruthgrayimages@hotmail.com
<http://facebook.com/gallery2gallery>

Florence Nightingale Memorial Hall in the village of Holloway. From Cromford follow signs for Crich/Holloway. From Matlock turn off A615 signed to Crich/Lea/Holloway. The venue is on the main road to Crich up from John Smedleys Mill.



77

C

Silver and Skies

An exciting new range of work by Artists Janice Allen and Karina Goodman inspired by the ever changing world above us. Janice's stardust and luna collections offer simple elegant pieces and Karina's atmospheric oil paintings offer moonlight, reflections and mystique. Chat over coffee, commissions welcome.

Studio61 - Karina Goodman Gallery, Leashaw, Holloway, Nr Matlock. DE4 5AT
01629 534532 • Karinagoodman@btinternet.com
<http://Studio61gallery.co.uk>

From Cromford follow signs for Crich/Holloway. From Matlock turn off A615 signed to Crich/Lea/Holloway. The gallery is on the main road to Crich up from John Smedley's and next to Maycock's Butchers.



78

Malcolm Smith

Seating that just might be alive.

29 Market Place, Cromford, Matlock. DE4 3RE
01629 826620
<http://www.malcolmdavidsmith.jimdo.com>

Enter Cromford Market Place. Park. Look for the larger fish and chip restaurant and the Studio Workshop is up the drive to the right.



79-80

The Old Lock Up Studio, Swifts Hollow, 19 The Hill, Cromford. DE4 3RF

Arriving in the market place from the A6, Swifts Hollow is approx 50 mts past the butchers shop on the left down a small lane. Suggest parking at the Greyhound Hotel.

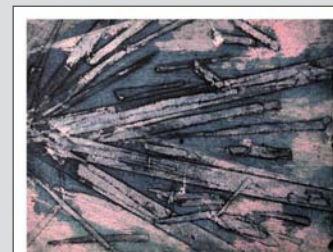
79

C

Natalie Hallows

Through the process of drawing, painting and printmaking I use these organic materials to explore mark making, whilst representing the quarrying industry that still thrives today.

07587 175972 • nataliehallows.fineart@gmail.com
<http://nataliehallowsfineart.wordpress.com>



80

CP

Alan Matkin

My photographic style has evolved around activities in workplace/garage, cityscapes, urban exploration and areas of decay and decline. Also the effects of light on different subjects i.e smoke, water and glass.

07541 954827 • alankirstie@sky.com
<http://www.alanmatkinphotography.com>



81

CT d

Cromford Studio and Gallery

Cromford Studio and Gallery a venue for 3 artists, Louise West Lace Design, Martin Sloman watercolours and Sheila Gill watercolours. All artists will be demonstrating their skills throughout the three days.

Cromford Studio and Gallery, Market Place, Cromford. DE4 3QE
01629 826434 • cromfordstudioandgalleryinfo@gmail.com
<http://www.cromfordstudioandgallery.weebly.com>

Cromford Studio and Gallery is in the centre of Cromford Village opposite the Greyhound Pub with plenty of free parking.



82

d

Susan Burgess

Medium to large seascapes and landscapes. Mainly oil on canvas. Influenced by the Cornish coastline and Derbyshire scenery.

Neathbank Holt Lane, Lea, Matlock. DE4 5GQ
01629 534104 • info@susanburgessart.co.uk
<http://www.susanburgessart.co.uk>

At A6 Cromford crossroads follow signs for Lea and Holloway. Bear left at Smedleys Mill towards Lea. After the Sports Centre, turn right at the Jug and Glass pub into Holt Lane. Neathbank is top left.



83-87

Willersley Castle, Hotel Mill Lane, Cromford. Matlock. DE4 5JH

From A6 South: turn Right at Cromford traffic lights, pass Arkwright's Mills and over bridge. Turn immediate Left. Hotel signposted. From A6 North: turn Left at lights and as above. Morning Coffees/Lunches/Afternoon Teas all available in hotel in lovely countryside.

83

TD

Lynn Smith & Peter Wigley

Lynn's watercolour and oil paintings are floral and landscape in a traditional style. Peter's landscape paintings relate to the countryside and wild places he visits.

01332 840653 • lynn.esmith@yahoo.co.uk
<http://www.peterwigleyart.com>



84

CD

Julie Walton

Based in Derby, UK, Julie Walton designs and makes contemporary beaded jewellery, using combinations of silver, semi-precious stones, pearls, crystals and glass. This beautiful, handcrafted jewellery has been designed as 'one-off' or limited edition pieces unlikely to be seen on anyone else.

01332 523275 • walton-jc1@sky.com
<http://www.juliewaltonjewellery.co.uk>



83-87

Willersley Castle, Hotel Mill Lane, Cromford. Matlock. DE4 5JH

From A6 South: turn Right at Cromford traffic lights, pass Arkwright's Mills and over bridge. Turn immediate Left. Hotel signposted. From A6 North: turn Left at lights and as above. Morning Coffees/Lunches/Afternoon Teas all available in hotel in lovely countryside.

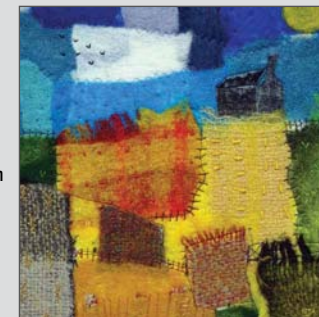
85

TD

Marion Anniss

Innovative textile work across a range of techniques focussing mainly on needle felting and the quilting of digitally designed images. All pieces draw on observation and experimental design work. Visit my website www.marionanniss.com for more detailed information on my work.

01142 550535 • mjbanniss@gmail.com
<http://www.marionanniss.com>



86

CD

Sandi Williams

Some of the more interesting pieces of my work have an element of happenstance as I'm often not sure what I'm going to make until I start cutting and then something happens and a hanging, bendy, quirkie or just a simple bowl appears.

01246 414388 Mobile 07710 123241 • sandiwilliams@talktalk.net
<http://www.fusionsglass.com>



87

CD

Heather Arbon

Contemporary textile art inspired by the natural world. Framed work using fabric layers, paints, embroidery incorporating dried petals or leaves. 3D work including: signature dragonflies and butterflies in freehand machine embroidery on soluble fabric and large vessels in silk paper. New work on display.

01246 231645 • arbonspike@aol.com
<http://HeatherArbonTextileArt.co.uk>



88

TD

TIES Textile Innovation Exploring Stitch

Pam Rowley, Cass Rawlings, Denise Mclelland, Jeannette Jackson, Sue Coles, Marion Anniss come together to display innovative and contemporary designs. Techniques include piecing, collage, lamination, needle felting, paint, slow stitch, weaving and paper manipulation. More details at www.ties7.org.uk.

Cromford Mill Gallery, Mill Road, Cromford, Derbyshire. DE4 3RQ
01142 341422 • suecoles@btinternet.com
<http://www.ties7.org.uk>

From A6 South; at Cromford turn right at traffic lights and left into Cromford Mill car park. From A6 North turn left at the Cromford traffic lights, the Gallery is half way down the courtyard on the left. Open from Saturday 21st May to Thursday 2nd June, 10 am - 4 pm.



89

C

Rachel Emmerson

Beautiful, hand-engraved, bespoke jewellery in silver and gold with richly coloured enamels. Rachel designs and manufactures all her pieces in her workshop at Cromford Mills.

Building 16, Cromford Mills, Cromford, Matlock. DE4 3RQ
07930 603208 • rachel@rachelemmerson.com
<http://www.rachelemmerson.com>

Turn off the A6 at Cromford traffic lights onto Mill Road. Rachel's workshop is situated in the main courtyard of Cromford Mills. Ample parking.



90-94

Coach House Studios, Crown Yard, Market Place, Wirksworth. DE4 4ET

The venue is through the large arch off Market Place. Wirksworth carnival and well dressing is also happening - check their website to see when roads may be busy or closed, or contact Helen Leaf for details and parking information.

90

CTd

Matthieu Leger

Contemporary oil paintings.

07887 486221 • m.a.t.leger@hotmail.co.uk
<http://www.matthieuleger.com>



91

CTd

Artywood by Dianna Lee

Dianna is known locally for painting onto oak panels in a modern concept using the beauty of the wood grain to enhance the picture. She is also known for painting onto furniture, canvas, slates, murals, illustrations, and is a compassionate tutor.

07773 025844 • mail@artywood.co.uk
<http://www.artywood.co.uk>



92

CTd

Helen Leaf

Turned wood combined with antler and other natural materials, gilded with gold leaf. Also, silver and bronze acorns, twigs and cast jewellery, all inspired by nature and prehistory.

mail@leaftradingpost.com
<http://www.leaftradingpost.com>



90-94

Coach House Studios, Crown Yard, Market Place, Wirksworth. DE4 4ET

The venue is through the large arch off Market Place. Wirksworth carnival and well dressing is also happening - check their website to see when roads may be busy or closed, or contact Helen Leaf for details and parking information.

93

CTd

Angie Salfeld

Angie is a textile artist using large scale and unique pieces in diverse mediums to interpret colour, shape and texture. Her work includes: large wall grids based on Derbyshire scenery which integrate photography, screen printing and knitting; textured wall pieces; fascinating 3D interactive works.

07905 000643 • angiesalfeld@hotmail.co.uk



94

Cd

Jane Bevan

I am a lifelong collector and an artist with a passion for English woodlands. Walking and exploring amongst ancient trees near my home, I gather interesting and eye catching natural materials to carry home and stitch, tie and bind into artworks.

07941 626452 • janebevan@btconnect.com
www.janebevan.co.uk



95

CTD

Susan Tracey

Colourful paintings in oil on linen, my work is inspired by landscapes and water.

Leabrooks Arts Complex, 36 Leabrooks Rd., Somercotes, Alfreton. DE55 4HB
01246 222279 • susantraceyart@gmail.com
<http://www.susantraceyart.com>

Leabrooks Gallery is easily accessible from the south via Derby and the A38, from the north via Chesterfield and the A61, and is less than four miles from Junction 28 of the M1.



96

Pd

Gillian Radcliffe

Expressive, colourful and dynamic landscapes and seascapes often inspired by a wanderlust for travel in Europe and beyond, as well as by the beauty of Derbyshire and the Staffordshire Moorlands.

Flaxdale House, Parwich, Ashbourne. DE6 1QA
01335 390433 • gillradcliffe@w3z.co.uk
<http://www.gillianradcliffe-art.net>

From A515 Ashbourne/Buxton Road, take the B5056 2 miles north of Ashbourne (signed to Bakewell). After 3 miles, take a left turn to Parwich. We are on Main Street opposite the postbox, a few yards from the Village Hall.



97

CTD

Peak District Artisans at the Haybarn Beechenhill Farm

Six Peak District Artists showing original paintings, prints, wood carvings, ceramics, photography, cards and gifts in a warm and beautiful stone flagged barn at organic farm with tea and cakes.

The Haybarn, Beechenhill Farm, Ilam Moor Lane, Ilam, Ashbourne. DE6 2BD
01335 310467 • info@beechenhill.co.uk
<http://www.beechenhill.co.uk/content1.asp?pageld=5&SubID=64>

Beechenhill is 1 mile up steep hill north of Ilam, past school. When hill goes flat on top, we're 1st on the left, down farm drive. Park in 1st yard. Haybarn has small café.



98

Pd

Ruby Hickmott

Expressive sea/landscape paintings & sketches in oils, watercolours, ink & charcoal.

4 Church Walk, Parwich, Ashbourne. DE6 1QA
01335 390323 • rubyarts@tiscali.co.uk
<http://www.rubyhickmott.co.uk>

From A515 Ashbourne/Buxton road take the B5056 - 2 miles north of Ashbourne (signed to Bakewell) After 3 miles take a left turn to Parwich. In Parwich turn right into Creamery Lane & bear left onto Church Walk.



99

CTPD

Angela Thompson

Hand made fused glassware ranging from bespoke dichroic glass jewellery items, dishes, bowls, pictures and household decorations. I also undertake commissions and run glass workshops.

Glass @ the Barn Carr Hall Farm, business units, Turnditch, Turnditch / Hulland Ward. DE56 2LW
07962 263244 • minxenamels@yahoo.co.uk
<http://www.glass-at-the-barn.co.uk>

From Belper: take A517 towards Ashbourne, at Cross "o" the Hands crossroad take left turn. Turn right at junction Intakes Lane then right to Hulland Ward in about 1/2 mile Carr Hall Farm business units are on your left.



100

CT

Jen Oldknow

Jen's work is inspired by her love of the countryside and the animals which live within it. She uses drawing, painting and printmaking techniques to create her sensitive and expressive work, in celebration of the beauty of the natural world.

The Jen Oldknow Studio, 56 Pinewood Road, Belper. DE56 2TS
jenny.oldknow@btinternet.com
<http://www.jennyoldknow.com>

From the A517, from either Belper or Ashbourne, turn up Belper Lane at the Talbot Inn, take the second left up Mount Pleasant Drive, take the first right onto Knowle Avenue, then the second right onto Pinewood Road.



101

Td

Colin Halliday

Bold thick application of oil paint, painted on location mainly around Derbyshire. Showing with Galleries across the UK for over 10 years, an established Artist with an ever growing reputation and collectors.

7 Cumberhills Road, Duffield, Derby. DE56 4HA
07759 595294 • challiday1964@btinternet.com
<http://www.colinhallidayart.co.uk>

A6 to Duffield, Wirksworth Road, and Cumberhills Road is last road before leaving the village. Cumberhills Road leads to Keddleston.



102

CTPd

Ron Brooks

Chinese painters use a traditional brush dipped in black ink/colour, subjects include flowers, birds, animals, mountains and rivers. The painter aims to capture the life and spirit of the subject making it live through the brush of the painter and the eyes of the viewer.

Cherrytree Studio, 247 Nottingham Road, Ilkeston. DE7 5AT
01158 493651 • ron.brooks2@ntlworld.com

The Cherrytree Studio is on the A609 Nottingham Rd, just below a small island at the junction of Cavendish Road opposite Shaw St and the Magic Wok. Parking is in the surrounding streets, Sunday parking on Nottingham Road.



103

CTD

Felicity Jackson

Watercolour wildlife, some pastel; also atmospheric landscapes and mellowed buildings.

Long Eaton Art Room, Community Arts Centre, 29 - 31 Lime Grove, Long Eaton, Nottingham. NG10 4LD
01332 557443 • felicity.jackson.art@gmail.com
<http://felicityjacksonart.co.uk>

Exit M1 or A52 at Long Eaton, at the mini roundabout turn right for Long Eaton. At the next roundabout turn left onto Derby Road (A6005) signposted Beeston/Long Eaton. Turn right onto Lime Grove, we are on the bottom left.



104

CTd

Banks Mill Studios

Visit Banks Mill to meet fifteen artists all under one roof: Kirstie Adamson Farah Batool Art Susan Bedford Barbara Colbert Leren Connor Fashion Stevie Davies Glass Kim Fowler Green Door Printmaking Mig Holder Textiles Mandy Kay Tarnia Magee Lyanne McCredie Smallprint Company Symbiosis Anne Wassell.

Banks Mill Studios, 71 Bridge Street, Derby. DE1 3LB
01332 597866 • banksmill@derby.ac.uk
<http://banksmill.co.uk>

Located on the corner of Brook and Bridge Street on the outskirts of the city centre, it's 10 minutes walk from Intu Centre and two miles from Derby train station. There is easy access to the A38, A50 and A52.



105

CTP d

Victoria Brown

Vibrant oil paintings with liquid leaf and gold leaf on canvas. Victoria's most recent projects are; 'Losing Lace' celebrating the Nottingham lace industry and 'Blossom' painted during her arts residency at the National Trust's Hardwick Hall and Chaddesden, both projects supported by Arts Council England.

Crow Wood Farm, Locko Road, Derby. DE21 7BU
07973 162721 • victoria@victoriabrownart.com
<http://www.victoriabrownart.com>

From Spondon follow Locko Road past Bluebells ice cream farm, past Locko Hall entrance, past another sharp bend and Crow Wood farm is the next entrance on right.



106

CP D

Philip Evans

Philip makes a range of thrown vessels and slabbed lidded boxes which have a series of coloured slips built up in different textured layers using various sponges and brushes. Most pieces are multi-fired and are often rubbed down between firings to enhance the worn surfaces.

The Round House Gallery, The Firs, Uttoxeter Road, Foston Village, near Derby. DE65 5DL
01283 585348 • pj.evans@btconnect.com
www.roundhousegallery.co.uk

The Gallery & workshop is situated about 1.5 miles heading towards Derby on the A50 leading from the Sudbury roundabout. Leave the A50 immediately after going under a metal footbridge. The Gallery is then just 400 yards on the left.



107

CT d

J&H Art

An exhibition of work from two artists - Harold Blackman - animals, landscapes, flowers, still life, cartoons. Julia Gardner - watercolour, pen and pencil creating fine detailed work in a variety of subjects. Original works plus prints and gift ware from both artists, commissions welcomed.

Melbourne House, Nooning Lane, Draycott, Derby. DE72 3NZ
07585 778207 • juliagardner100@hotmail.com

From Derby take the A6005 from Borrowash towards Long Eaton. Nooning Lane is a right hand turn on Draycott border, almost on top of the old canal bridge. There's lots of car parking on the grass verges on the lane.



108-111

108

CT d

David William Sampson

Ceramic figurative sculpture with a fairy tale twist, entertaining the quirky and anthropomorphic ideas. Hares, birds, squirrels and more morphed with human form. Eerie, whimsical and playful. Come and visit the wonders of David William Sampson's Studio.

07941 749424 • art@davidwilliamsampson.com
<http://www.davidwilliamsampson.com>

Plenty of FREE parking in & around the venue, just by 'The Chandelier' on Derby Road. The studios overlook the graveyard on West Park. There is disabled access to the craft fair, but not to the Artist Studios.



108-111

109

CT D

Long Eaton Art Room, Community Arts Centre, 29-31 Lime Grove, Long Eaton. NG10 4LD

Exit M1 or A52 at Long Eaton, at the mini roundabout turn right for Long Eaton. At the next roundabout turn left onto Derby Road (A6005) signposted Beeston/Long Eaton. Turn right onto Lime Grove, we are on the bottom left.

Long Eaton Art Room

Long Eaton Art Rooms has 12 artists studio spaces, most of which will be open for the weekend as well as some visiting artists in our former lace factory site. Demonstrations, free entry, free parking in our carpark and refreshments available all weekend.

0115 9461661 • info@leartrroom.co.uk
<http://www.longeatonartroom.co.uk>



110

CT d

Mary Graham

I knit fine stainless steel and coloured wire into one-off sculptural forms, which are equally at ease lying on the windowsill or pinned to clothing. I also make jewellery and sculptural forms in porcelain clay.

07812 393822 • mary.graham@newgramit.plus.com



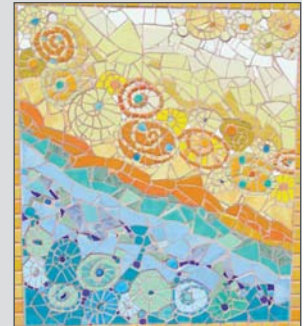
111

CT D

Annie Nicoll

In my mosaics and textiles I explore rich, intense colour and create highly decorative images interpreting my own drawings and designs contrasting geometric forms with freely drawn shapes. I use a variety of media creating beautiful items to enhance your home.

01332 670452 • annienicoll@yahoo.com



112

CT P D

Lumsdale Glass

Three Local glass makers demonstrating age old skills to create beautiful bespoke pieces of handmade, lead crystal glass. A chance to see a variety of demonstrations showing different techniques, designs and colours. Jonathan Abbott, Thomas Petit and Glyn Scott. Instagram @matlockglass.

Unit 18, Lower Lumsdale Mills, Matlock. DE4 5EX
01629 580821 • 07964 710880 • lumsdaleglass@gmail.com

In the beautiful valley of Lumsdale just outside of Matlock, off the A615 going towards Alfreton. Leaving Matlock there are two roads you can take on your left after you leave the 30 mile an hour zone. Balloons will direct you. Refreshments and Snacks. Preview Evening Friday 27th May 6 - 8pm.





Meet the team 2016

We are a voluntary organisation run by a small team. We work hard to create an enjoyable event for both artists and visitors. If you have an interest in the arts and would like to get involved on the committee, please contact us.



Ally Rodgers. Chair and Committee Member.

Ally Rodgers was the instigator and overall Organiser of Derbyshire Open Arts from its inception in 2006. She eventually left to enable her to pursue other interests. However, she has recently rejoined Derbyshire Open Arts after its fallow year to regroup and strengthen the organisation with help from the team. Apart from Derbyshire Open Arts she works for Sheffield Hallam University to invigilate exams throughout the year. She also aims to get into her artist's workshop but fails most of the time - when she does she enjoys making linocut cards plus following her various craft projects!



Duncan Simpson. Treasurer and Committee Member.

Duncan is a painter working primarily in water-colour, gradually moving from traditional landscape to a more loose and vivid style. Duncan was on the committee for several years, before taking over as treasurer in 2013. Looking after the funds is a welcome break from creativity.



Olinda Everett. Secretary and Committee Member.

Olinda is a potter based in Ashover, making boxes and clay art books from high fired textured clay slabs, as well as sculptural forms. Her work is inspired by narrative storytelling and is influenced by her work as a relationship counsellor. She also collaborates with local arts groups in organising exhibitions and workshops throughout the year. Olinda is a member of Holymoorside and Walton Arts Festival, Chesterfield Action for the Arts Forum and Northern Potters Association committees. She joined the team in 2010 and became our secretary. She also manages the Derbyshire Open Arts membership news email.



Jennie Merriman. Brochure Officer and Committee Member.

Jennie comes from an embroidery and textiles background and now works as a mixed media textile artist and a printmaker. She is a member of a number of textile groups in Derbyshire, Sheffield, and the North of England and a member of Sheffield Printmakers, exhibiting with them and running workshops. Her present creative work focuses on printmaking, stitch, and constructed 3D pieces.



Adrian Holt. Committee Member.

Adrian is a ceramics artist based in Glossop. He joined the team in 2011 having exhibited as an artist for the last four Open Arts events. Adrian aims to promote the arts in the north of the county and recognises the important role that the Derbyshire Open Arts plays in this.



Caroline McFarlane. Advertising and Committee Member.

Caroline is primarily a portrait artist working in pencil, pastel and oil. She creates traditional portraits with a contemporary feel. She also delivers primary school portrait drawing workshops through Practical Portrait Workshops.



Ann Robson. Shadow Secretary and Committee Member.

Ann is a new committee member having previously participated in Derbyshire Open Arts as an artist. She is a weaver, currently concentrating on woven tapestry ideas. Her textiles tend to evolve out of art work which has itself been created as a result of walks. Also she can't help doing a bit of recycling in her fabric, paper and thread projects. Ann is the chair of Dodeka Designers.



Helen Jagger. Committee Member.

Helen has had a lifelong passion for textiles through teaching and then more recently promoting sustainable textiles through her work and classes in the Buxton area.



Andy Rodgers. Distribution Officer.

Andy was a committee member and treasurer from the first event in 2006 until he chose to stand down in 2013. More recently he has volunteered to rejoin the event, offering to oversee the process of distributing brochures and other publicity around the county. In his "other" life he still regularly plays football (now with the over-60s), works occasionally at Sheffield Hallam University, and is still available to prepare the occasional "Overground" map when requested.



A - Z Directory of Artists

Adcock Lizzie	75	Textile & product designer	Bonsall
Allen Roger	61	Painting	Holymoorside
Annis Marion	85	Textile	Cromford
Arbon Heather	87	Contemporary textile art	Cromford
Askey Jill	60	Textile	Holymoorside
Aspire Art	50	Painting/Photography	Chesterfield
Baldock Sheila	65	Water colour, mixed media	Holymoorside
Banks' Mill Studios	104	Mixed	Derby
Barnes et al	48	Mixed	Chesterfield
Bates Ann	72	Ceramics	Matlock
Bevan Jane	94	Natural Materials	Wirksworth
Blatherwick Sue	37	Ceramics	Longnor
Brindley Sarah	35	Furniture, 3D art	Buxton
Brocklehurst Helen	20	Painting and Ceramics	Whaley Bridge
Brooks Ron	102	Chinese brush painting	Ilkerton
Brook St. Studios	2	Glass/jewellery/design/print	Glossop
Brown Victoria	105	Painting	Derby
Burgess Susan	82	Mixed media and oils	Lea, Matlock
Comley Andy	21	Film	Whaley Bridge
Connolly John	45	Paintings	Bolsover
Cromford Studio	81	Mixed	Cromford
Culkin Gwenda	64	Textiles	Holymoorside
Cunningham Tamsin	22	Textile art	Whaley Bridge
Daniel Jerry	54	Landscape photography	Holymoorside
DD Print W'shop	59	Printmaking	Holymoorside
Eastwood John	31	Landscape photography	Buxton
Emmerson Rachel	89	Fine Jewellery	Cromford
Evans Phillip	106	Ceramics	Foston Village
Everett Olinda	53	Ceramics	Holymoorside
Finch Che	33	Ceramics	Buxton
Gallery 2 Gallery	76	Mixed	Holloway
Gent Paul	10	Drawing/painting/m. media	New Mills
Glasscoe Louise	29	Clothing/jewellery/furnishings	Buxton
Graham Mary	110	Knitted wire/porcelain	Long Eaton
Gratton Miranda	73	Fused and Stained Glass	Matlock
Gt. L'stone Village Hall	40	Mixed	Great Longstone
Greenland Maureen	44	Pottery	Holmesfield
Green Man Gallery	30	Contemporary fine art/craft	Buxton
Hallam Eddie	74	Bronze Wildlife Sculptures	Riber, Matlock
Halliday Colin	101	Oil painting	Duffield
Hallows Natalie	79	Painting/printmaking	Cromford
Hayfield Artists Ashlar	4	Draw/paint/print/illustrate	Hayfield



Hayfield Art's Throstle Fm	5	M.media./jewellery/Pottery	Little Hayfield
Heywood Karen	6	Painting	Birch Vale
Hearsum, Mulroy & Wilson	26	Paint/pottery/wood carving	Blackwell
Herrick Karen	63	Textile/mixed media	Holymoorside
Hickmott Ruby	98	Mixed media	Parwich
Hoodith David	12	acrylic/watercolour/oils	New Mills
Hummerstone Anne	11	Textile art	New Mills
Jackson Felicity	103	Watercolour Painting	Allestree
J & H Art	107	Watercolour/pen/pencil	Draycott
Jannetta Louise	28	Fine Art	Buxton
Joseph Andrea	15	Illustration	Furness Vale
Lane Patricia	46	Mixed media	Bolsover
Langley Mark	70	Fine art	Darley Dale
Leaf Helen	92	Wood/antler/silver/bronze	Wirksworth
Lee Dianna	91	Fine art on wood	Wirksworth
Leger Matthieu	90	Contemporary oil paintings	Wirksworth
Lewis-Eccleston Jan	36	Ceramic Sculpture	Longnor
Long Eaton Art Room	109	Mixed	Long Eaton
Longmate Carl	32	Painter	Buxton
Lovell Matthew	42	Wood turner	Youlgrave
Lumsdale Glass	112	Glass Makers	Matlock
McFarlane Caroline	57	Portraiture	Holymoorside
Marsden Ruth	9	Paintings	New Mills
Matkin Alan	80	Photography	Cromford
Merriman Jennie	58	Collagraph print	Holymoorside
Monkey Park Artists	52	Mixed media	Chesterfield
More Care Design C'tive	34	Furniture/sculpture/paintings	Buxton
Moss Linda	24	Felt, yarns, paintings	Chapel en le Frith
Nature:Art:Nurture	25	Textile/Ceramics/Paint/Print	Blackwell
New Mills Gallery	13	Mixed	New Mills
Nicoll Annie	111	Mosaics and Textiles	Long Eaton
Oldknow Jen	100	Drawing, painting, print	Belper
Old Station Gallery, The	68	Visual art/ceramics/sculpture	Rowsley
Parkin Sarah	62	Watercolour landscape	Holymoorside
Parkin Simon	3	Landscape painting	Glossop
Peak D. Artisans H'barn	97	Mixed	Ilam, Ashbourne
Peak D. Artisans W'worth	71	Mixed	Darley Dale
Pear Tree Cafe	18	Linocut/painting/photography	Whaley Bridge
Pigott Graham	23	Mixed media	Grindleford
Platt Lesley	39	Painting and embroidery	Great Longstone
Poynter Sarah	16	Printmaker	Whaley Bridge
Radcliffe Gillian	96	Watercolour and mixed media	Parwich



Rastrick Rachael	38	Textiles	Baslow
Robson Ann C	67	Textiles	Holymoorside
Roe Trudy	56	Etchings and monoprints	Holymoorside
Rodgers Andy	47	Letters from Chesterfield	Chesterfield
Rothwell Jenny	8	Contemporary jewellery	New Mills
Salfield Angie	93	Art and textiles	Wirksworth
Sampson David W	108	Ceramic figurative sculpture	Long Eaton
Sampson Valda	55	Paintings and embroidery	Holymoorside
Sharpley Paula	41	Mixed media	Bakewell
Silver and Skies	77	Jewellery and paintings	Holloway
Smith Geraldine Y	66	Mixed media	Holymoorside
Smith L and Wigley P	83	Watercolour and oils	Cromford
Smith Malcolm	78	Chairs	Cromford
Stowell Kay	19	Glass	Whaley Bridge
Student Showcase	51	Multi-Disciplinary work	Chesterfield
Take Ten	27	Various Media, mainly 2D	Buxton
Taylor Chris	7	Calligraphy/hand lettering	Birch Vale
Textile House	14	Textiles	New Mills
Thompson Angela	99	Fused Glassware	Holland Ward
TIES	88	Contemporary textiles	Cromford
Tracey Susan	95	Painting	Somercotes
Walton Julie	84	Contemporary jewellery	Cromford
Wharton Sue	49	Encaustic Arts	Chesterfield
Wilbraham Cheryl	69	Watercolour	Darley Dale
Wilkinson Lynne	43	Fine Art	Apperknowle
Williams Deiniol	1	Ceramics	Glossop
Williams Sandi	86	Fused glass creations	Cromford
Wilson Rob	17	Mixed media	Whaley Bridge

Liability - Notice to All

Derbyshire Open Arts, the artists and craftspeople or the venues cannot be held liable, jointly or individually, for any loss or injury sustained at any of the venues or consequentially, and all appropriate precautions for security and safety must be taken by individuals at the event or on subsequent occasions when attending for tuition or other purposes. Be aware that venues may be equipped with chemicals, tools, machinery or other materials or processes all or any of which may be hazardous.

Derbyshire Open Arts does not inspect the venues, therefore each individual person working at or visiting any of the venues takes responsibility for any attendant risk to which he or she may be subject.

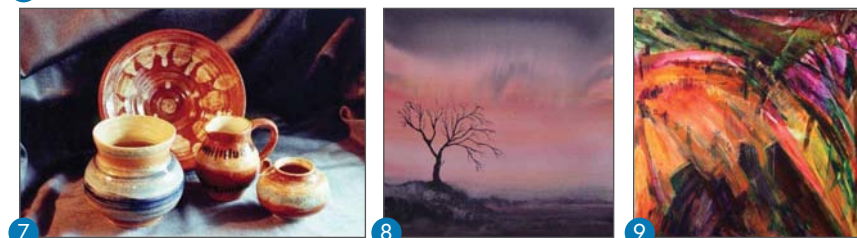


10. The original Committee, from right to left, Andy and Ally Rodgers, Frances Watt, Rosie Gilligan, and David Hoodith.

Artists exhibiting in 2016 who also exhibited in the first Derbyshire Open Arts with their 2006 images; and [above] the original founding Committee.



1. Sheila Gill, 2. Janine Mannion-Jones, 3. Malcolm Smith, 4. Anne Menary, 5. Jennie Merriman, 6. Ingrid K. Karlsson, 7. Maureen Greenland, 8. Karina Goodman, 9. Jenny Mather.



The inaugural Derbyshire Open Arts event was held in 2006 and marked the beginning of a popular county event. The event runs entirely on Artists' subscriptions and voluntary manpower from the Committee members.

DERBYSHIRE OPEN ARTS 2016

Bank Holiday weekend
28th, 29th, 30th May



www.derbyshireopenarts.co.uk